

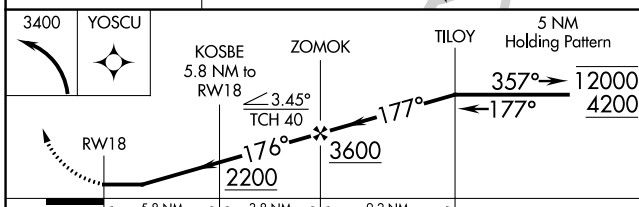
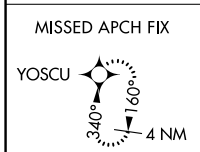
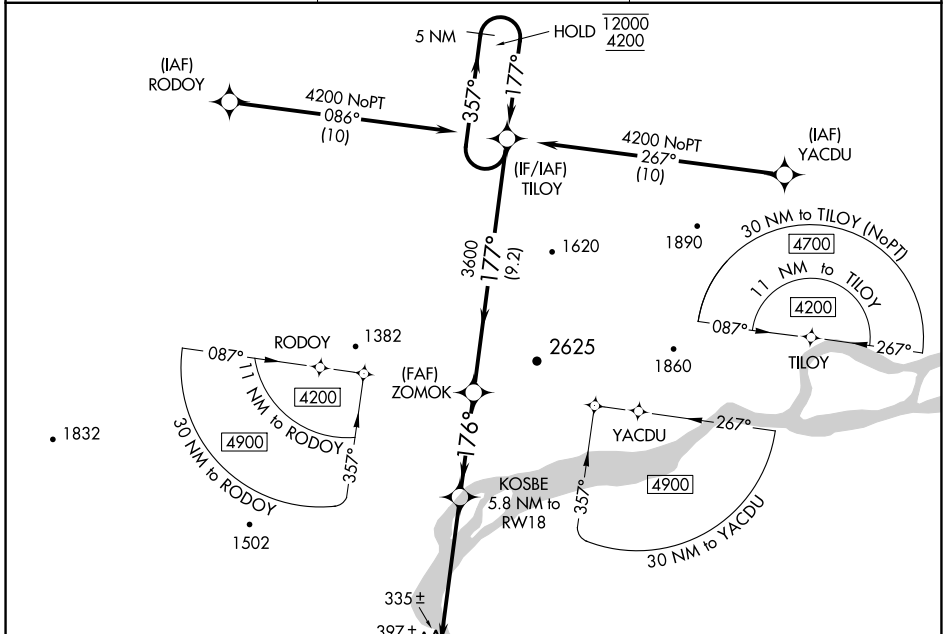
WAAS CH <b>87142</b> <b>W18A</b>	APP CRS <b>176°</b>	Rwy Idg TDZE <b>58</b> Apt Elev <b>58</b>	<b>3620</b>
--	------------------------	---	-------------

# RNAV (GPS) RWY 18

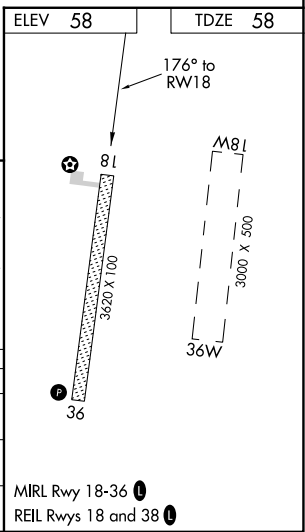
RUSSIAN MISSION (RSH)(PARS)

RNP APCH.	Rwy 18 helicopter visibility reduction below 1 SM NA. Rwy 18 Straight-in and Circling minimums NA at night.	MISSED APPROACH: Climbing left turn to 3400 direct YOSCU and hold.
-----------	--	--

AWOS-3P <b>118.375</b>	ANCHORAGE CENTER <b>118.15 251.05</b>	CTAF <b>122.9</b>
---------------------------	--	----------------------



CATEGORY	A	B	C	D
LP MDA	580-1	522 (600-1)	580-1½	522 (600-1½)
LNAV MDA	660-1	602 (700-1)	660-1¾	602 (700-1¾)
<b>C</b> CIRCLING	740-1	682 (700-1)	1120-3 1062 (1100-3)	1360-3 1302 (1400-3)



AK, 31 OCT 2024 to 26 DEC 2024

AK, 31 OCT 2024 to 26 DEC 2024

MIRL Rwy 18-36  
REIL Rwy 18 and 38