

RNAV (GPS) RWY 12

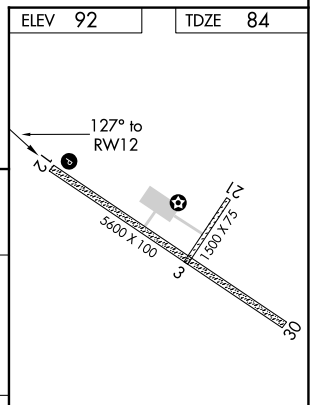
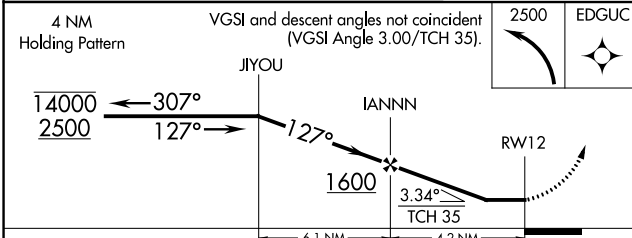
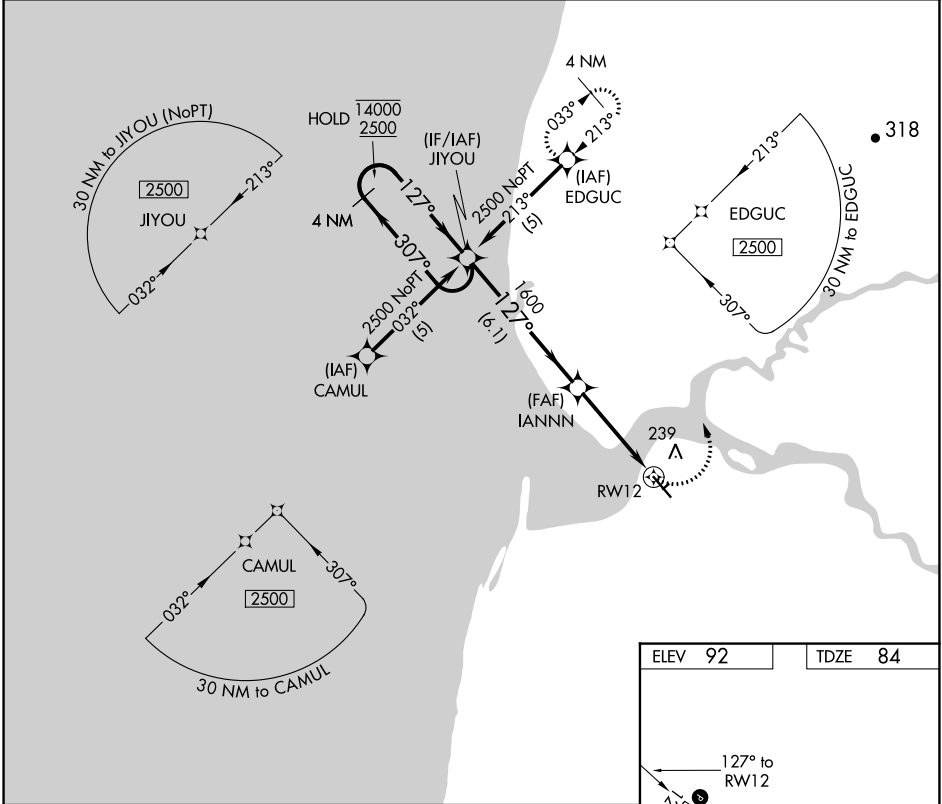
EGEGIK (EII) (PAII)

APP CRS 127°	Rwy Idg 5600
	TDZE 84
	Apt Elev 92

RNP APCH.
 ▼ Rwy 12 helicopter visibility reduction below 1 SM NA.

MISSED APPROACH: Climbing left turn to 2500 direct EDGUC and hold.

AWOS-3P 135.65	ANCHORAGE CENTER 124.8 354.0	CTAF 122.8 0
--------------------------	--	------------------------



CATEGORY	A	B	C	D
LNVA MDA	600-1	516 (600-1)	600-1 ³ / ₄ 516 (600-1 ³ / ₄)	NA
CIRCLING	800-1	708 (800-1)	800-2 ¹ / ₄ 708 (800-2 ¹ / ₄)	NA

REIL Rwy 12 0
 MIRL Rwy 3-21 and 12-30 0

AK, 31 OCT 2024 to 26 DEC 2024

AK, 31 OCT 2024 to 26 DEC 2024