

WAAS CH 72822 W03A	APP CRS 029°	Rwy Idg TDZE Apt Elev	6501 246 246
--	------------------------	-----------------------------	---

RNAV (GPS) RWY 3

RALEIGH EXEC JETPORT AT SANFORD-LEE COUNTY (TTA)

▼ Baro-VNAV NA when using Raleigh/Durham altimeter setting. For uncompensated Baro-VNAV systems, LNAV/VNAV NA below -15°C (5°F) or above 54°C (130°F). DME/DME RNP-0.3 NA.

▲ When local altimeter setting not received, use Raleigh/Durham altimeter setting and increase all DA 81 feet and all MDA 100 feet. Increase LNAV/VNAV all Cats visibility to 1½ mile, LNAV Cats C and D visibility to 1 mile, and Circling Cat C visibility to 2 mile and Cat D visibility to 2¾ mile. For inop MALS, increase LNAV/VNAV all Cats visibility to 1¼ mile and LNAV Cats C and D visibility to 1½ mile. For inop MALS when using Raleigh/Durham altimeter setting, increase LPV all Cats visibility to 7⁄8 mile and LNAV Cats C and D visibility to 1½ mile. VDP NA when using Raleigh/Durham altimeter setting.

MALS

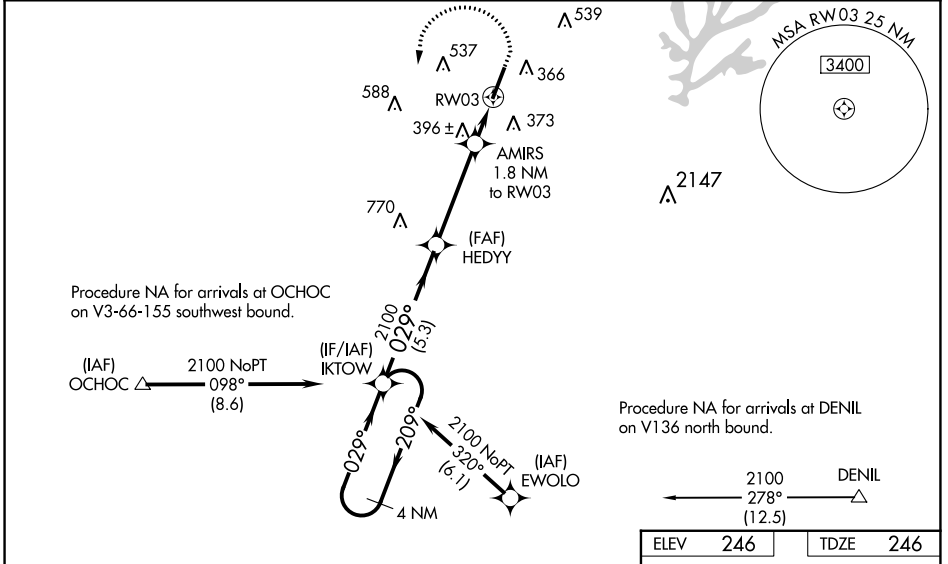
MISSED APPROACH:
Climb to 1300 then climbing left turn to 2100 direct IKTOW and hold.

AWOS-3
120.625

RALEIGH APP CON
125.3 353.675

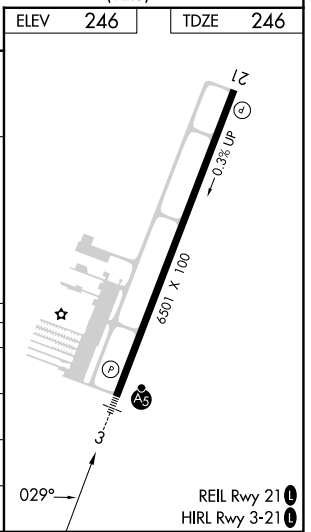
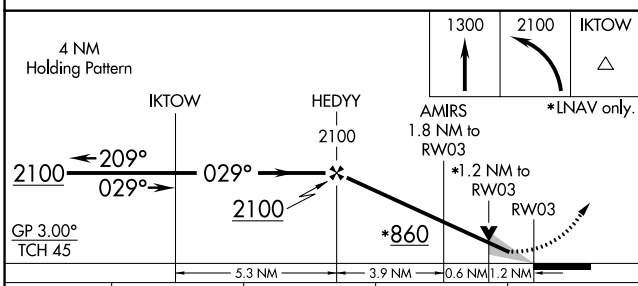
UNICOM
123.075 (CTAF) 0

GCO
135.075



SE-2, 28 NOV 2024 to 26 DEC 2024

SE-2, 28 NOV 2024 to 26 DEC 2024



CATEGORY	A	B	C	D
LPV DA		446-½	200 (200-½)	
LNAV/VNAV DA		634-7⁄8	388 (400-7⁄8)	
LNAV MDA	660-½	414 (500-½)	660-¾	414 (500-¾)
C CIRCLING	760-1 514 (600-1)	820-1 574 (600-1)	840-1½ 594 (600-1½)	960-2¼ 714 (800-2¼)

RNAV (GPS) RWY 3