

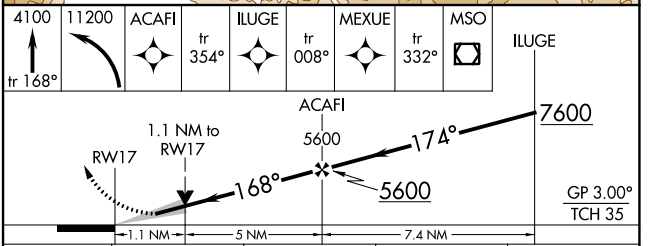
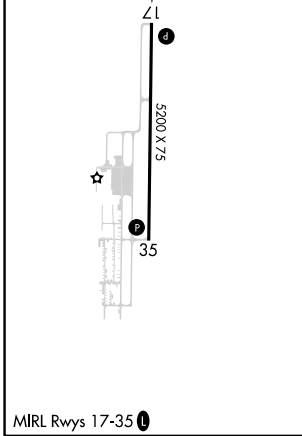
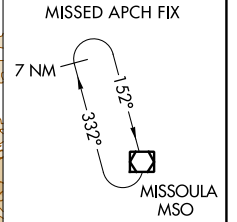
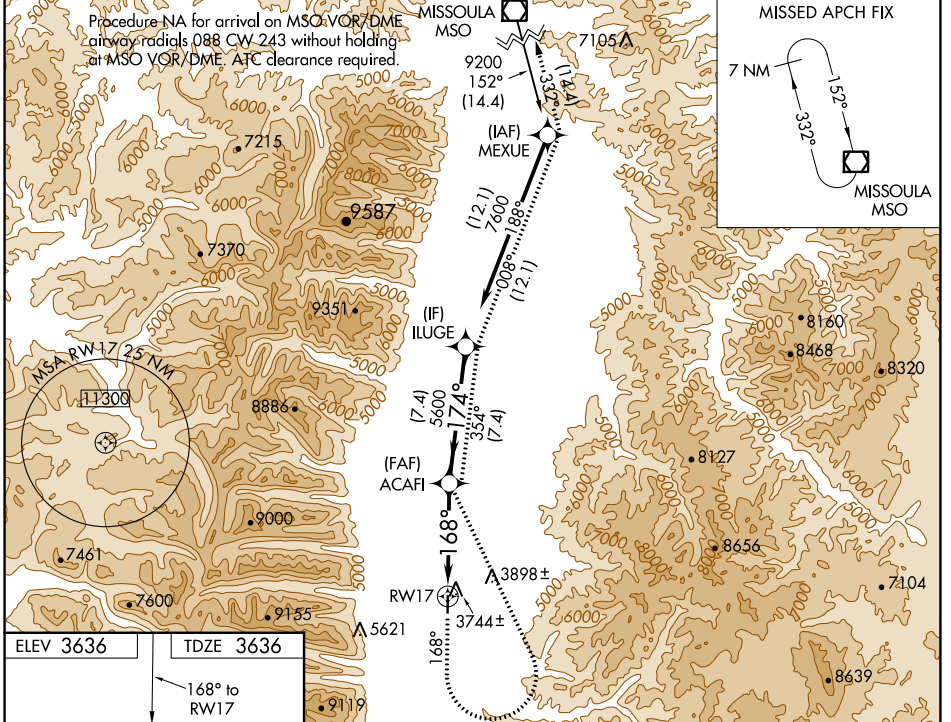
WAAS CH 60945 W17A	APP CRS 168°	Rwy Idg TDZE Apt Elev	5200 3636 3636
--	------------------------	-----------------------------	---

RNAV (GPS) RWY 17

RAVALLI COUNTY (H.R.F.)

RNP APCH-GPS.	MISSED APPROACH: (Do not exceed 130K until ACAFI) Climb to 4100 on 168° then climbing left turn to 11200 direct ACAFI and track 354° to ILUGE and track 008° to MEXUE and track 332° to MISSOULA VOR/DME and hold.
---------------	---

AWOS-3P 119.825	SALT LAKE CENTER 132.4 338.3	UNICOM 122.8 (CTAF) 0
---------------------------	--	---------------------------------



CATEGORY	A	B	C	D
LPV DA	3886-1	250 (300-1)		NA
LNAV/VNAV DA	3920-1 284 (300-1)	4084-1 3/8 448 (500-1 1/2)		NA
LNAV MDA	4020-1 384 (400-1)	4320-1 684 (700-1)		NA
CIRCLING	4240-1 604 (700-1)	4320-1 684 (700-1)		NA

NW-1, 28 NOV 2024 to 26 DEC 2024

NW-1, 28 NOV 2024 to 26 DEC 2024