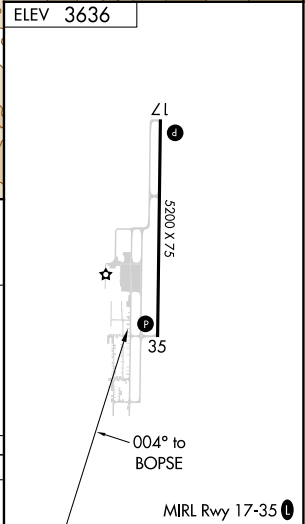
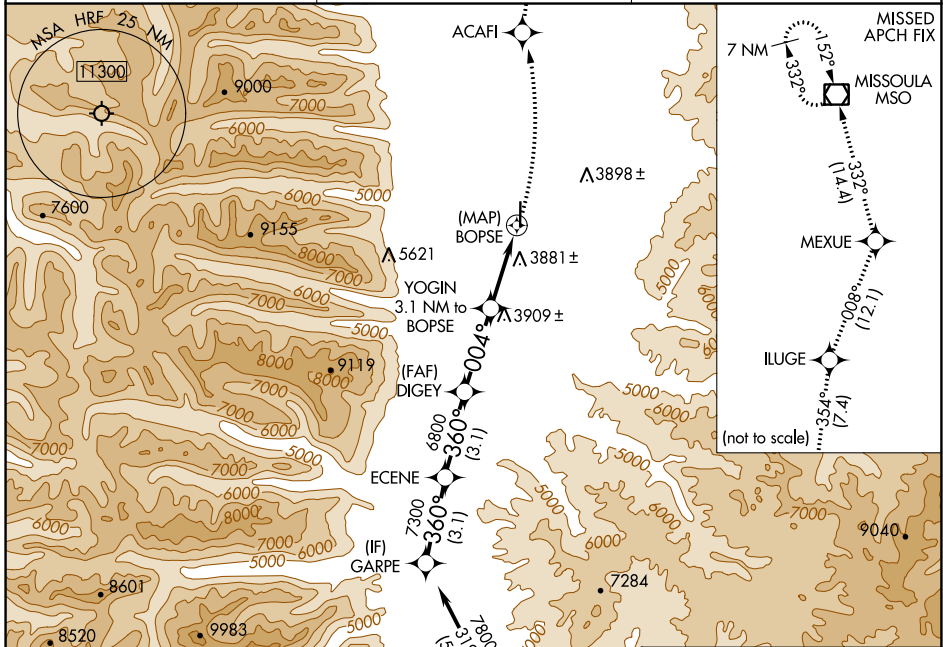


APP CRS 004°	Rwy Idg TDZE Apt Elev	N/A N/A 3636
------------------------	-----------------------------	---

RNAV (GPS)-A
RAVALLI COUNTY (HRF)

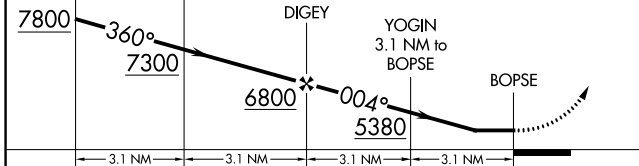
RNP APCH-GPS.	MISSED APPROACH: Climbing left turn to 11200 direct ACAFI and on track 354° to ILUGE and track 008° to MEXUE and track 332° to MISSOULA VOR/DME and hold.
Circling to Rwy 35 NA at night. Rwy 35 helicopter visibility reduction below 1 SM NA.	

AWOS-3P 119.825	SALT LAKE CENTER 132.4 338.3	UNICOM 122.8 (CTAF)
---------------------------	--	-------------------------------



Procedure NA for arrivals at WEDAK on V231 southbound.	(IF) GARPE	(FAF) DIGEY	(MAP) BOPSE	(IF) WEDAK
7300	6800	3600	7300	3600
(3.1)	(3.1)	(3.1)	(3.1)	(3.1)
15.5	15.5	15.5	15.5	15.5

GARPE	ECENE	ACAFI	ILUGE	MEXUE	MSO
		tr 354°	tr 008°	tr 332°	



CATEGORY	A	B	C	D
CIRCLING	4240-1 604 (700-1)	4260-1 624 (700-1)		NA

NW-1, 28 NOV 2024 to 26 DEC 2024

NW-1, 28 NOV 2024 to 26 DEC 2024