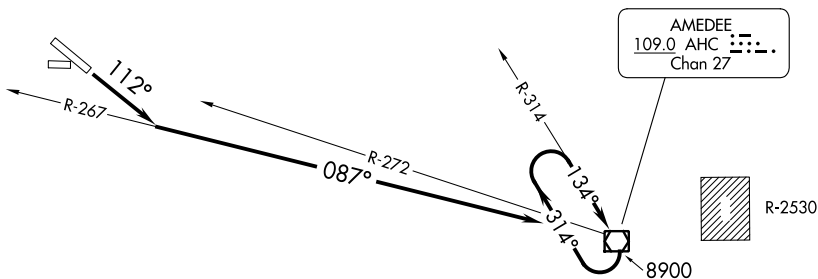


OAKLAND CENTER  
128.8 285.5  
CTAF  
122.8



TAKEOFF MINIMUMS

Rwys 7, 25, 29: NA- obstacles.

Rwy 11: Standard with minimum climb of 410' per NM to 6000  
or 1900-2½ for climb in visual conditions.

NOTE: Chart not to scale.

DEPARTURE ROUTE DESCRIPTION

TAKEOFF RUNWAY 11: Climb via 112° heading and AHC R-267 to AHC VOR/DME, Thence. . . .

Or climb in visual conditions to cross Susanville Muni Airport eastbound at or above 6000, then via AHC R-272 to AHC VOR/DME, Thence. . . .

. . . .cross AHC VOR/DME at or above 8900'. Climb in AHC holding pattern to depart AHC VOR/DME at or above 14000 before proceeding on course.

SW-2, 28 NOV 2024 to 26 DEC 2024

SW-2, 28 NOV 2024 to 26 DEC 2024