

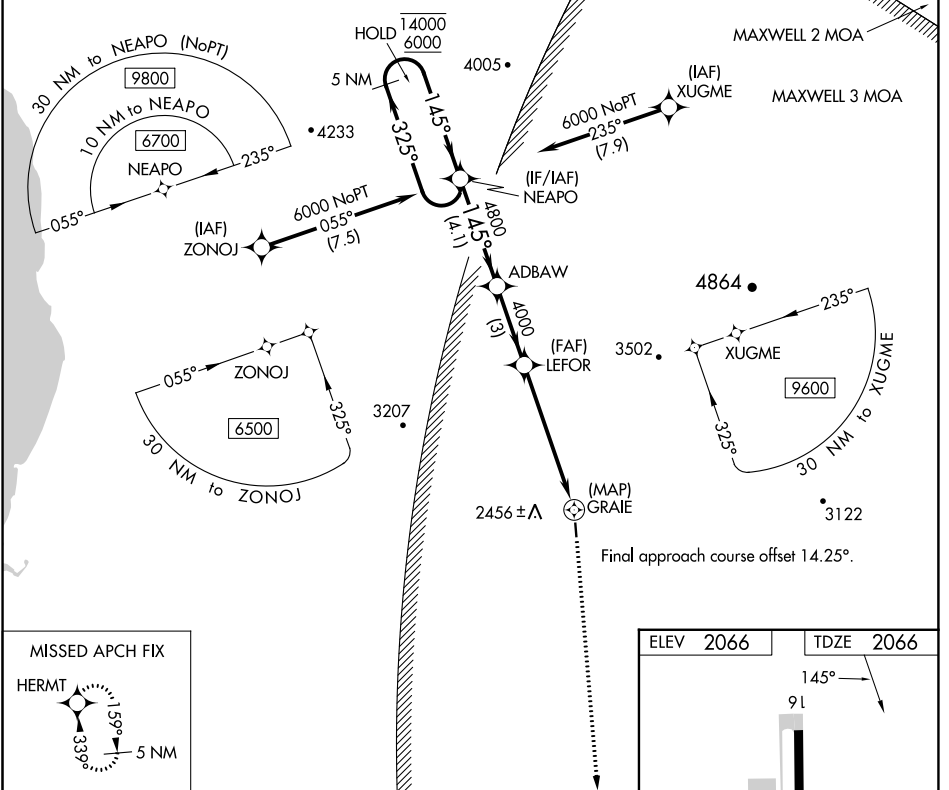
APP CRS	Rwy Idg	2705
145°	TDZE	2066
	Apt Elev	2066

RNAV (GPS) RWY 16

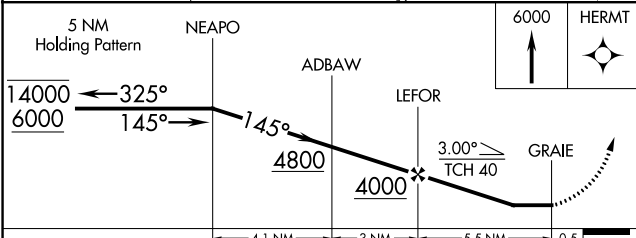
ELLS FLD/WILLITS MUNI (O28)

RNP APCH - GPS.		MISSED APPROACH: Climb to 6000 direct HERMT and hold.
<p>Procedure NA at night. Circling NA west of Rwy 16-34.</p> <p>Use Ukiah altimeter setting; when not received, procedure NA.</p> <p>Rwy 16 helicopter visibility reduction below 1 SM NA.</p>		

UKI ASOS 119.275	OAKLAND CENTER 132.2 350.3	UNICOM 122.8 (CTAF)
----------------------------	--------------------------------------	-------------------------------



MISSED APCH FIX



ELEV 2066	TDZE 2066
-----------	-----------

The vertical scale diagram shows altitudes of 91, 2705 X 75, and 34 feet. A 1.4% UP slope is indicated. A star symbol is present at the 2705 X 75 altitude.

CATEGORY	A	B	C	D
LNVA MDA	3620-1¼ 1554 (1600-1¼)	3620-1½ 1554 (1600-1½)	3620-3 1554 (1600-3)	NA
CIRCLING	3620-1¼ 1554 (1600-1¼)	3620-1½ 1554 (1600-1½)	3620-3 1554 (1600-3)	NA

MIRL Rwy 16-34

SW-2, 28 NOV 2024 to 26 DEC 2024

SW-2, 28 NOV 2024 to 26 DEC 2024