

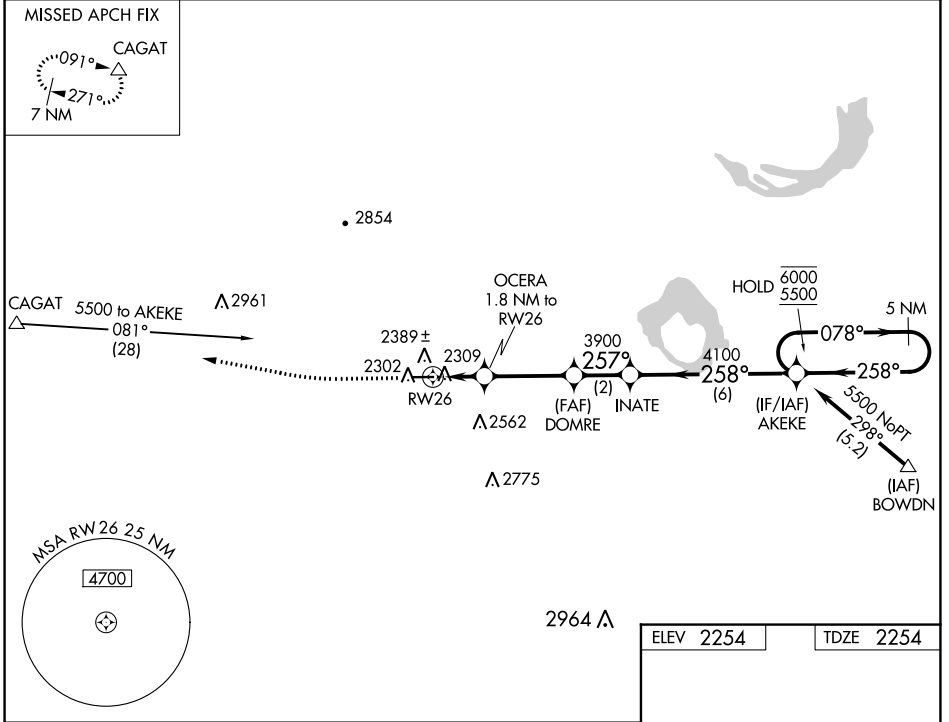
WAAS CH 97721 W26A	APP CRS 257°	Rwy Idg TDZE Apt Elev	4500 2254 2254
--	------------------------	-----------------------------	---

RNAV (GPS) RWY 26

MALTA (M75)

RNP APCH.	MISSED APPROACH: Climb to 2700, then climb to 6500 direct CAGAT and hold, continue climb-in-hold 6500.
-----------	--

AWOS-3 119.25	SALT LAKE CITY CENTER 126.85 305.2	AUNICOM 122.8 (CTAF)
-------------------------	--	--------------------------------



2700	6500	CAGAT	VGSI and descent angles not coincident (VGSI Angle 3.00/TCH 27).	
OCERA 1.8 NM to RW26		DOMRE	INATE	AKEKE 5 NM Holding Pattern
0.9 NM to RW26	0.9 NM to RW26	3900	4100	6000 5500
3.00° TCH 40		257°	258°	078°
2880		258°	258°	257° to RW26
0.9 NM		0.9 NM	3.2 NM	2 NM
6 NM				
CATEGORY	A	B	C	D
LP MDA	2560-1	306 (400-1)		NA
LNAV MDA	2640-1	386 (400-1)		NA
CIRCLING	2800-1 546 (600-1)	2880-1 626 (700-1)		NA

ELEV 2254	TDZE 2254
MIRL Rwy 8-26	

NW-1, 28 NOV 2024 to 26 DEC 2024

NW-1, 28 NOV 2024 to 26 DEC 2024