

APP CRS	Rwy Idg	<b>5032</b>
<b>305°</b>	TDZE	<b>5723</b>
	Apt Elev	<b>5737</b>

# RNAV (GPS) RWY 31

ESCALANTE MUNI (1L7)

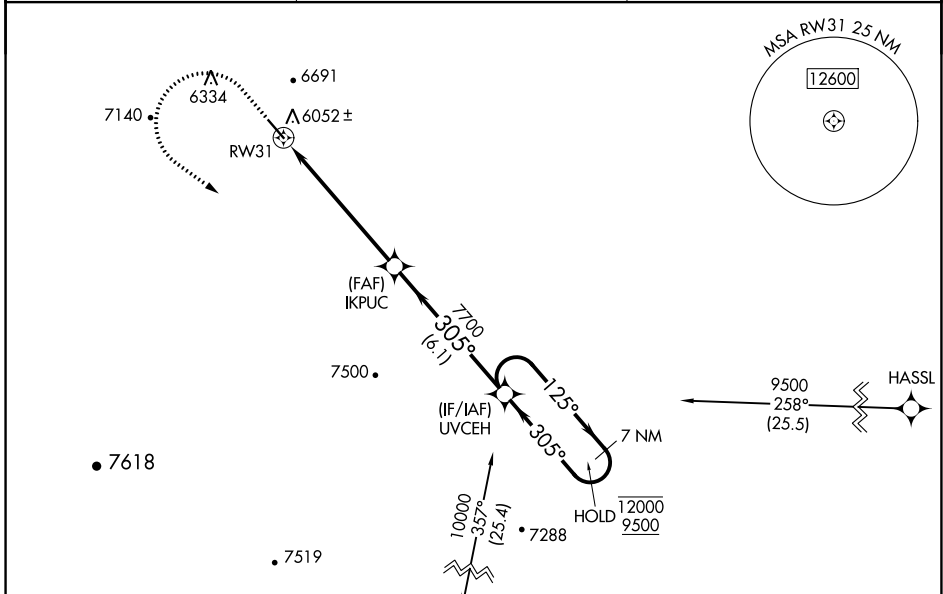
RNP APCH - GPS.

**▼** Baro-VNAV NA. Rwy 31 helicopter visibility reduction below 3/4 SM NA. Circling NA northeast of Rwy 13-31. Procedure NA at night. Use Page altimeter setting.

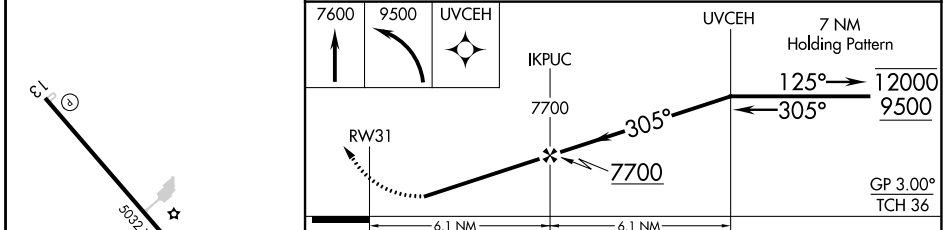
**▲** NA

MISSED APPROACH: Climb to 7600 then climbing left turn to 9500 direct UVCEH and hold, continue climb-in-hold to 9500.  
 \*Missed approach requires minimum climb of 328 feet per NM to 8000.  
 #Missed approach requires minimum climb of 306 feet per NM to 7900.

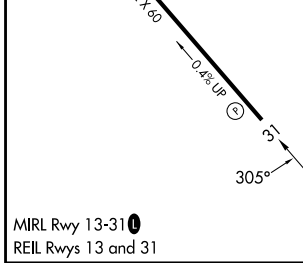
PGA ASOS <b>120.625</b>	SALT LAKE CENTER <b>133.6 269.25</b>	UNICOM <b>122.8 (CTAF) 0</b>
----------------------------	---	---------------------------------



ELEV 5737	TDZE 5723
-----------	-----------



CATEGORY	A	B	C	D
LNAV/VNAV DA*	6534-2½	811 (800-2½)		NA
LNAV MDA#	6720-1¼ 997 (1000-1¼)	6720-1½ 997 (1000-1½)		NA
LNAV/VNAV DA	7169-6	1446 (1500-6)		NA
LNAV MDA	6960-1¼ 1237 (1300-1¼)	6960-1½ 1237 (1300-1½)		NA
CIRCLING	6960-1¼ 1223 (1300-1¼)	6960-1½ 1223 (1300-1½)		NA



SW-4, 28 NOV 2024 to 26 DEC 2024

SW-4, 28 NOV 2024 to 26 DEC 2024