

APP CRS 122°	Rwy Idg 4020
	TDZE 2426
	Apt Elev 2434

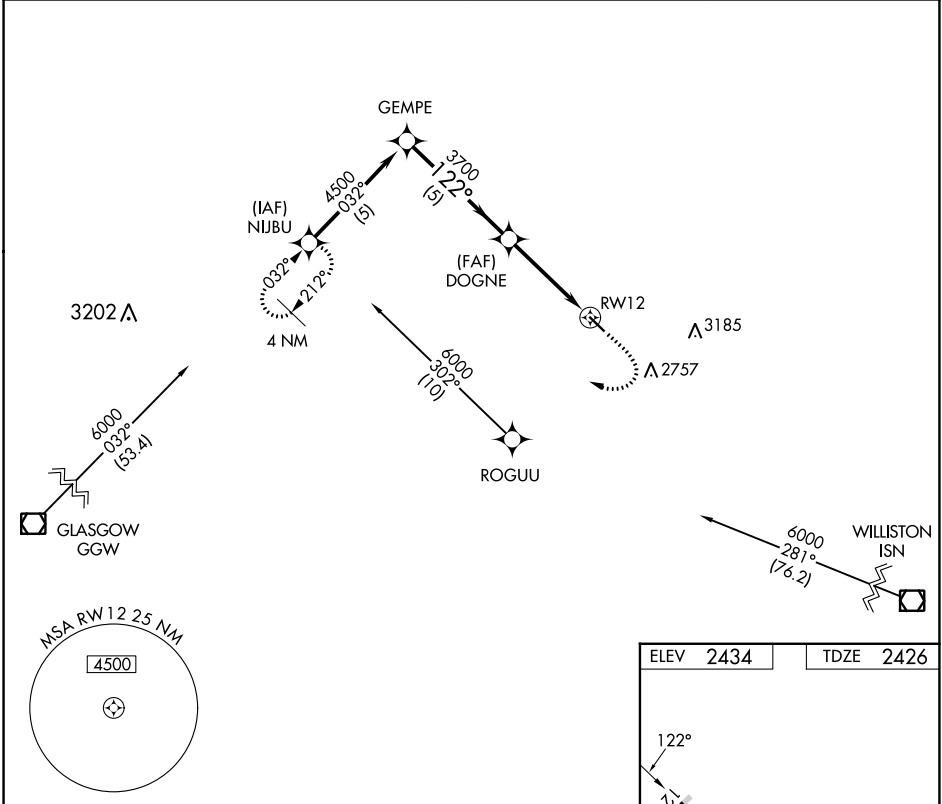
RNAV (GPS) RWY 12

SCOBEY (9S2)

▽ DME/DME RNP-0.3 NA. Use Wolf Point altimeter setting; when not received procedure not authorized.
△ NA Helicopter visibility reduction below 3/4 SM NA.

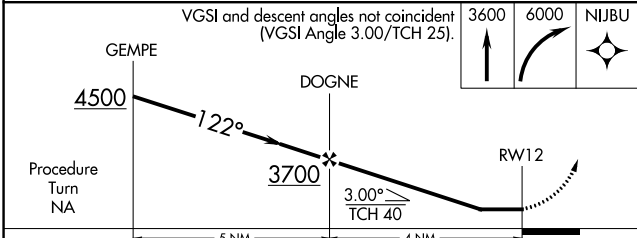
MISSED APPROACH: Climb to 3600 then climbing right turn to 6000 direct NIJBU WP and hold.

AWOS-3PT 128.325	OLF ASOS 118.325	SALT LAKE CITY CENTER 126.85 305.2	AUNICOM 122.8 (CTAF)
----------------------------	----------------------------	--	--------------------------------



NW-1, 28 NOV 2024 to 26 DEC 2024

NW-1, 28 NOV 2024 to 26 DEC 2024



CATEGORY	A	B	C	D
LNVA MDA	3100-1	674 (700-1)		NA
CIRCLING	3100-1 666 (700-1)	3160-1 726 (800-1)		NA

