

WAAS CH 86241 W20A	APP CRS 203°	Rwy Idg TDZE Apt Elev	4966 776 776
--	------------------------	-----------------------------	---

RNAV (GPS) RWY 20

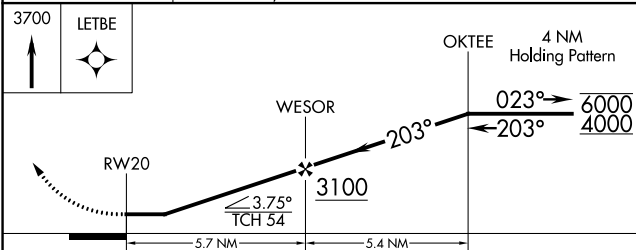
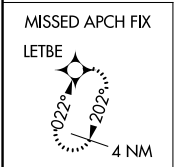
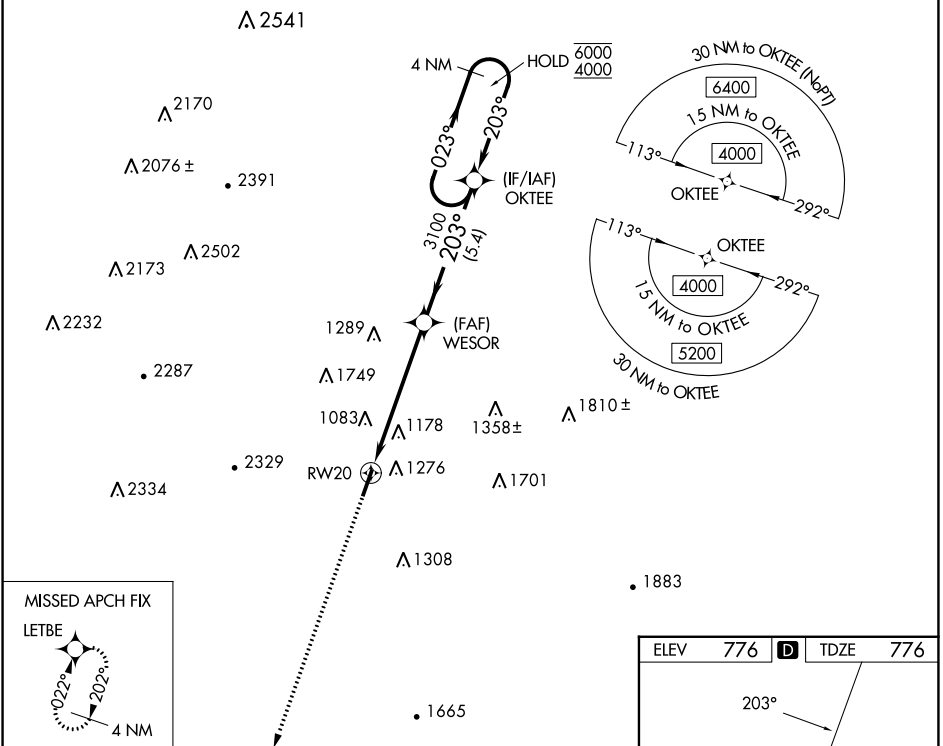
BARWICK LAFAYETTE (9A5)

RNP APCH - GPS.

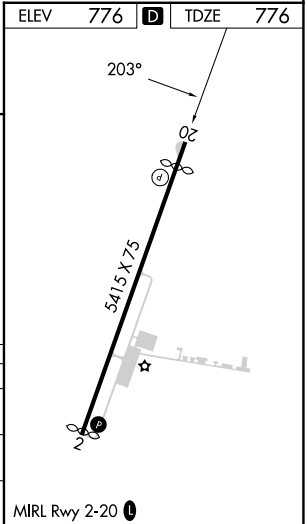
Procedure NA at night. Rwy 20 helicopter visibility reduction below 1 SM NA.
When local altimeter setting not received, use Chattanooga altimeter setting and increase all MDAs 80 feet.

MISSED APPROACH: Climb to 3700 direct LETBE and hold.

AWOS-3 119.775	CHATTANOOGA APP CON * 125.1 379.1	UNICOM 122.8 (CTAF) 0
--------------------------	---	---------------------------------



CATEGORY	A	B	C	D
LP MDA	1380-1 604 (700-1)		NA	
LNAV MDA	1440-1 664 (700-1)		NA	
CIRCLING	1660-1½ 884 (900-1½)		NA	



SE-4, 28 NOV 2024 to 26 DEC 2024

SE-4, 28 NOV 2024 to 26 DEC 2024