

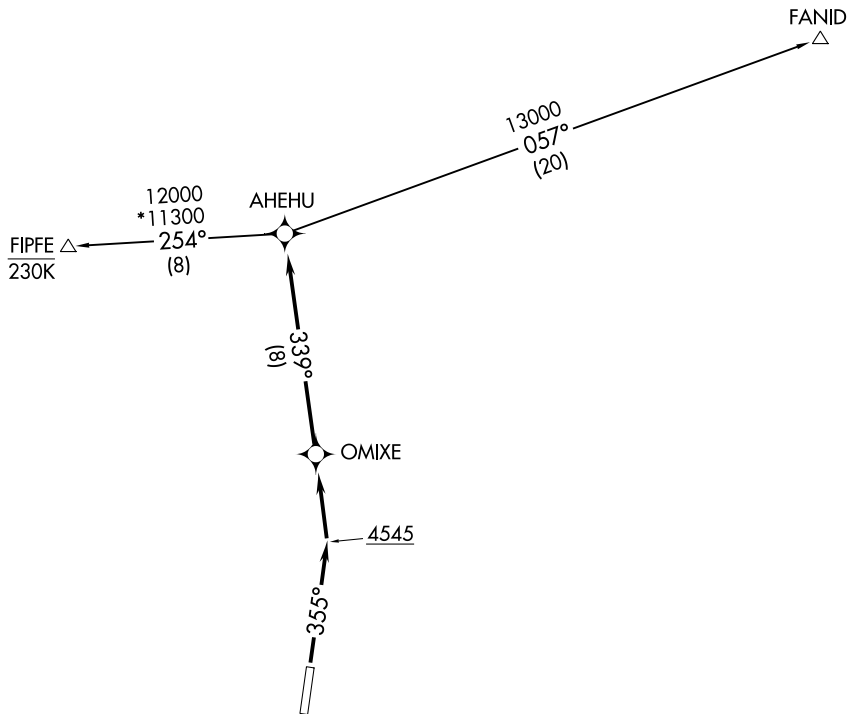
(AHEHU3.AHEHU) 23054

# AHEHU THREE DEPARTURE (RNAV)

AL-9513 (FAA)

LEMHI COUNTY (SMN)  
SALMON, IDAHO

SALT LAKE CENTER  
132.4 338.3



NW-1, 28 NOV 2024 to 26 DEC 2024

NW-1, 28 NOV 2024 to 26 DEC 2024

NOTE: RNAV 1.  
NOTE: GPS required.

### TAKEOFF MINIMUMS

Rwy 35: Standard with minimum climb of 420' per NM to 11800.

NOTE: Chart not to scale.



### DEPARTURE ROUTE DESCRIPTION

TAKEOFF RUNWAY 35: Climb heading 355° to 4545, then left turn direct OMIXE, then on track 339° to AHEHU, thence. . . .

. . . .on (transition).

FANID TRANSITION (AHEHU3.FANID)

FIPFE TRANSITION (AHEHU3.FIPFE)

# AHEHU THREE DEPARTURE (RNAV)

(AHEHU3.AHEHU) 31MAR16

SALMON, IDAHO  
LEMHI COUNTY (SMN)