

APP CRS	Rwy Idg	<b>5510</b>
<b>175°</b>	TDZE	<b>4041</b>
	Apt Elev	<b>4044</b>

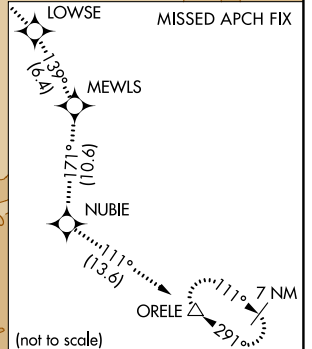
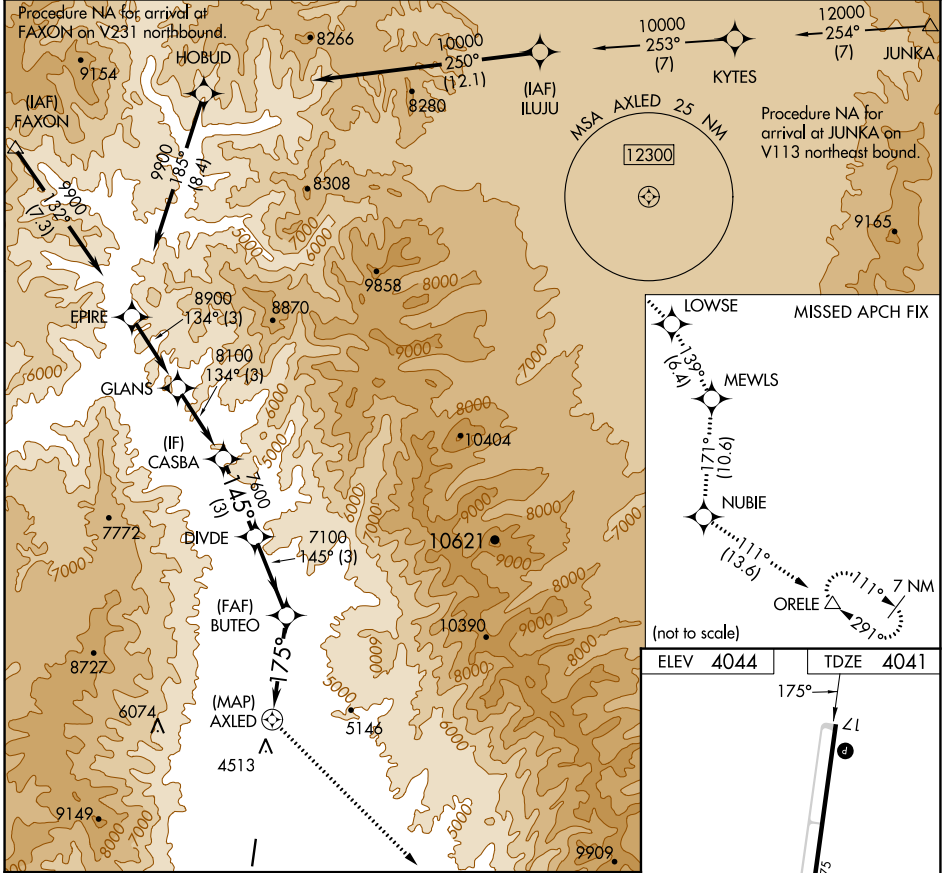
# RNAV (GPS) RWY 17

LEMHI COUNTY (SMN)

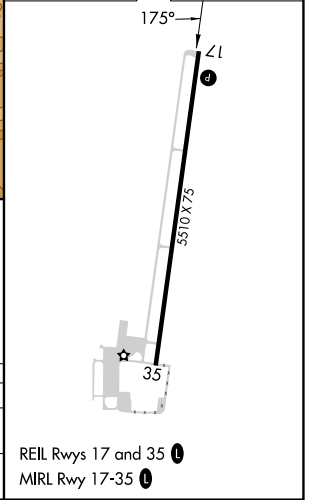
**⚠** NA DME/DME RNP-0.3 NA. Night landing: Rwy 35 NA.  
**⚠** NA Circling NA for Cats B and C east of Rwy 17-35.  
**⚠** -13°C Helicopter visibility reduction below 3/4 SM NA.

**MISSED APPROACH:** Climb to 13600 direct LOWSE and track 139° to MEWLS and track 171° to NUBIE and track 111° to ORELE and hold, continue climb-in-hold to 13600.

AWOS-3PT <b>135.075</b>	SALT LAKE CENTER <b>132.4 338.3</b>	UNICOM <b>122.8 (CTAF)</b>
----------------------------	--	-------------------------------



ELEV 4044	TDZE 4041
-----------	-----------



13600	LOWSE	MEWLS	BUTEO		DIVDE	CASBA
↑	⬅️	⬅️	tr 139°		145°	8100
			AXLED		7100	7600
			≤ 3.50°			
			TCH 55			
			175°			
			4.3 NM		3.8 NM	3 NM
			3 NM		3 NM	
CATEGORY	A	B	C	D		
RNAV MDA	5740-5 1699 (1700-5)				NA	
CIRCLING	5740-5 1696 (1700-5)		6180-5 2136 (2200-5)		NA	

NW-1, 28 NOV 2024 to 26 DEC 2024

NW-1, 28 NOV 2024 to 26 DEC 2024