

VOR/DME LKT 113.5 Chan 82	APP CRS 043°	Rwy Idg TDZE Apt Elev 4044	N/A N/A 4044
---	------------------------	--------------------------------------	--------------------

VOR/DME-B

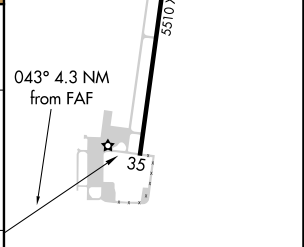
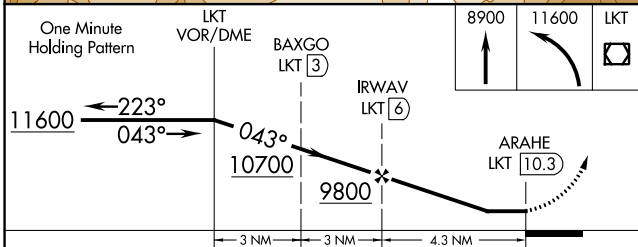
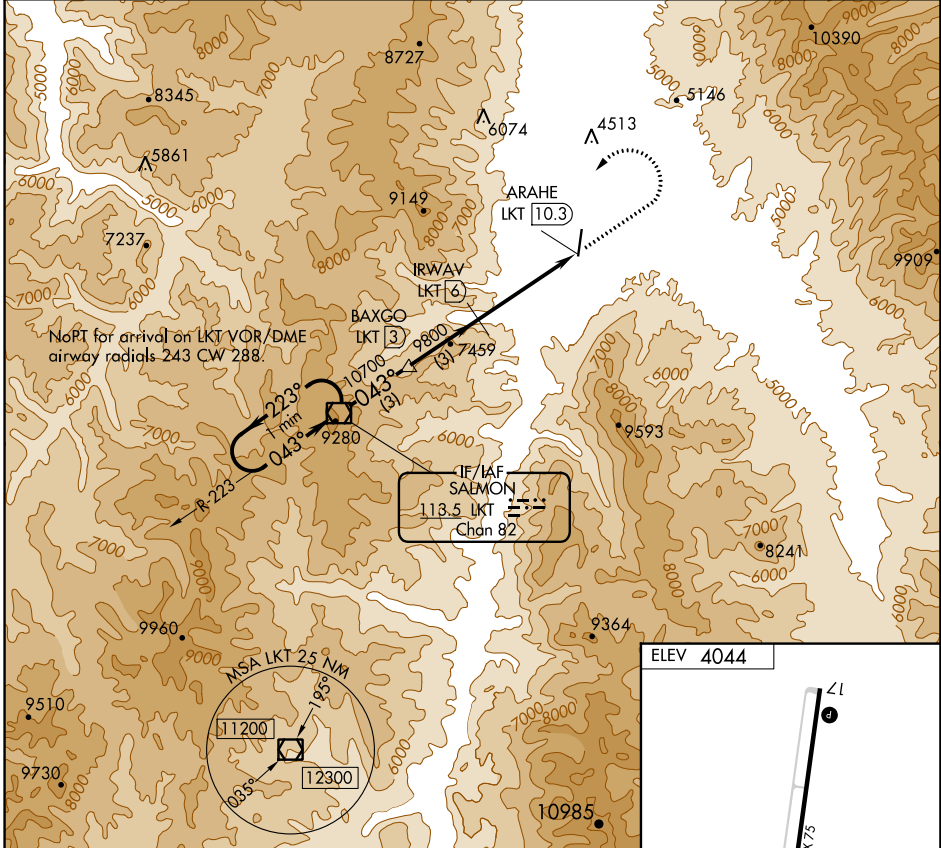
LEMHI COUNTY (SMN)

NA
-13°C

Circling NA for Cat C east of Rwy 17-35.
Night Landing: Rwy 35 NA.

MISSED APPROACH: Climb to 8900 then climbing left turn to 11600 direct LKT VOR/DME and hold, continue climb-in-hold to 11600.

AWOS-3PT 135.075	SALT LAKE CENTER 132.4 338.3	UNICOM 122.8 (CTAF)
----------------------------	--	-------------------------------



CATEGORY	A	B	C	D
CIRCLING	8100-1¼ 4056 (4100-1¼)	8100-1½ 4056 (4100-1½)	8100-3 4056 (4100-3)	NA

REIL Rwys 17 and 35
MIRL Rwy 17-35

NW-1, 28 NOV 2024 to 26 DEC 2024

NW-1, 28 NOV 2024 to 26 DEC 2024