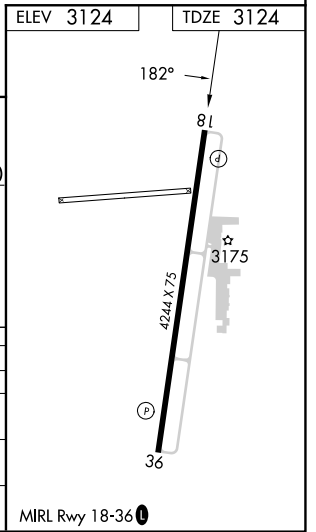
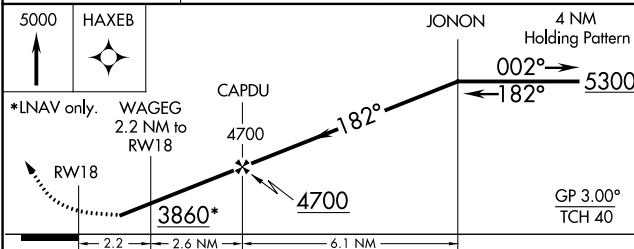
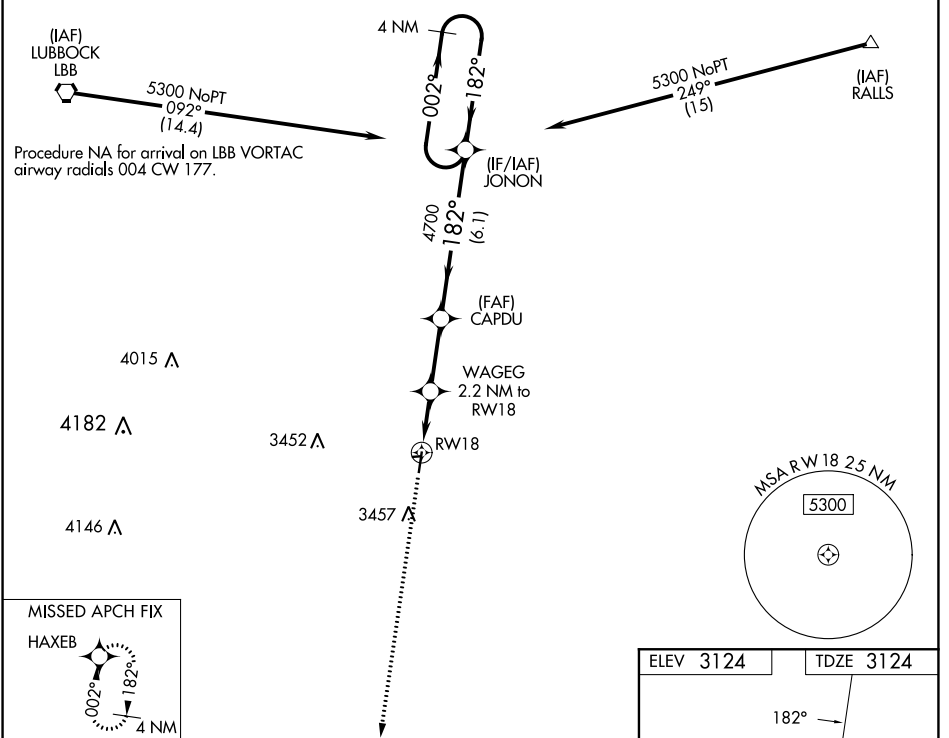


WAAS CH 42739 W18A	APP CRS 182°	Rwy Idg TDZE Apt Elev	4244 3124 3124
--	------------------------	-----------------------------	---

RNAV (GPS) RWY 18

CITY OF SLATON/LARRY T NEAL MEML (F49)

NA Baro-VNAV NA. DME/DME RNP-0.3 NA. Rwy 18 helicopter visibility reduction below 3/4 SM NA.	MISSED APPROACH: Climb to 5000 direct HAXEB and hold.	
LBB ASOS 125.3 270.275	LUBBOCK APP CON 119.2 351.8	UNICOM 123.0 (CTAF) 0



ELEV 3124	TDZE 3124			
5000	HAXEB			
*RNAV only.	WAGEG 2.2 NM to RWY 18			
CAPDU	4700			
RWY 18	3860*			
JONON	4 NM Holding Pattern			
GP 3.00°	TCH 40			
2.2	2.6 NM	6.1 NM	4	
CATEGORY	A	B	C	D
LPV DA		3427-1	303 (400-1)	
RNAV/VNAV DA		3427-1	303 (400-1)	
RNAV MDA		3480-1	356 (400-1)	
C CIRCLING	3680-1 556 (600-1)	3820-1 696 (700-1)	3820-2 696 (700-2)	3820-2 1/4 696 (700-2 1/4)

SC-2, 28 NOV 2024 to 26 DEC 2024

SC-2, 28 NOV 2024 to 26 DEC 2024