

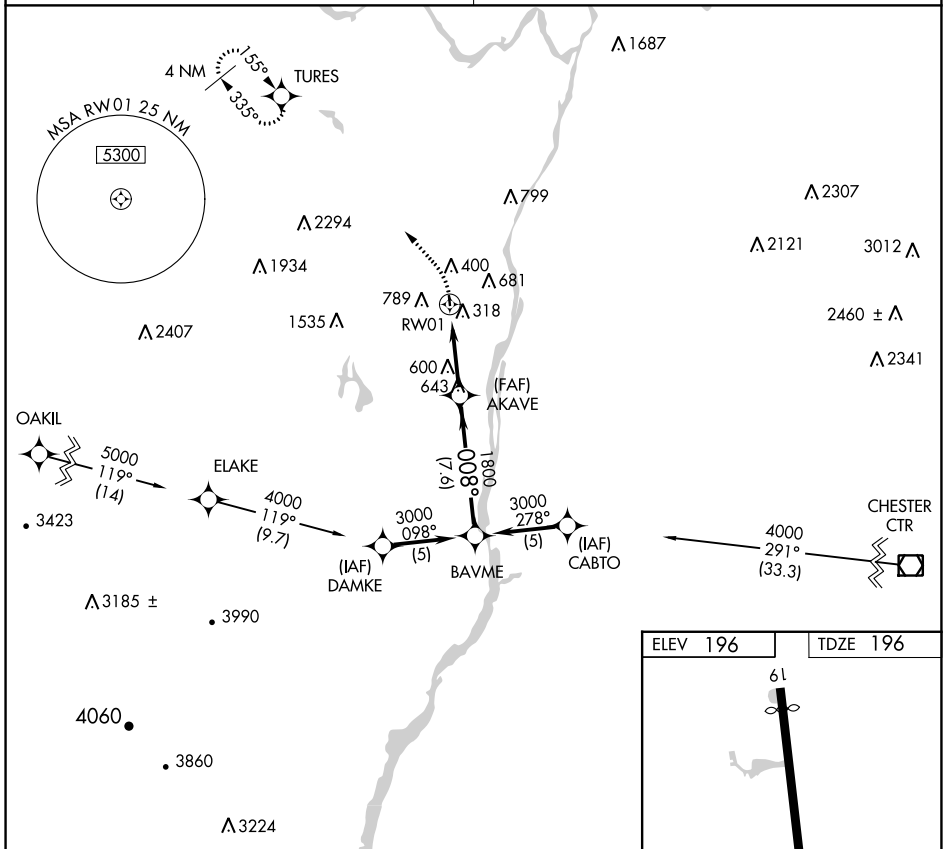
APP CRS	Rwy ldg	2703
008°	TDZE	196
	Apt Elev	196

RNAV (GPS) RWY 1

SOUTH ALBANY (4BØ)

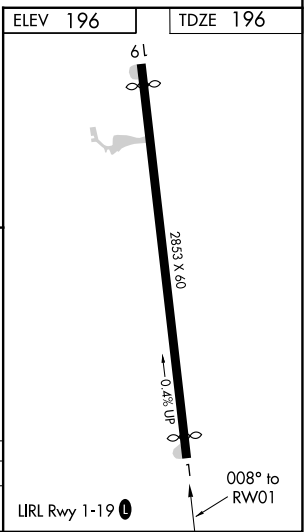
RNP APCH.	MISSED APPROACH: Climbing left turn to 3500 direct TURES WP and hold.
▼ Use Albany Intl altimeter setting. Procedure NA at night.	
▲ NA Rwy 1 helicopter visibility reduction below 1 SM NA.	

ALBANY APP CON 118.05 263.075	CTAF 122.9 0
---	------------------------



NE-2, 28 NOV 2024 to 26 DEC 2024

NE-2, 28 NOV 2024 to 26 DEC 2024



3500	TURES	Visual Segment - Obstacles.	BAYME
AKAVE		1800	3000
RW01		Procedure Turn NA	
4.9 NM		7.6 NM	
CATEGORY	A	B	C
LNVA MDA	960-1 764 (800-1)	960-1¼ 764 (800-1¼)	NA