

APP CRS	Rwy Idg	<b>2729</b>
<b>188°</b>	TDZE	<b>196</b>
	Apt Elev	<b>196</b>

# RNAV (GPS) RWY 19

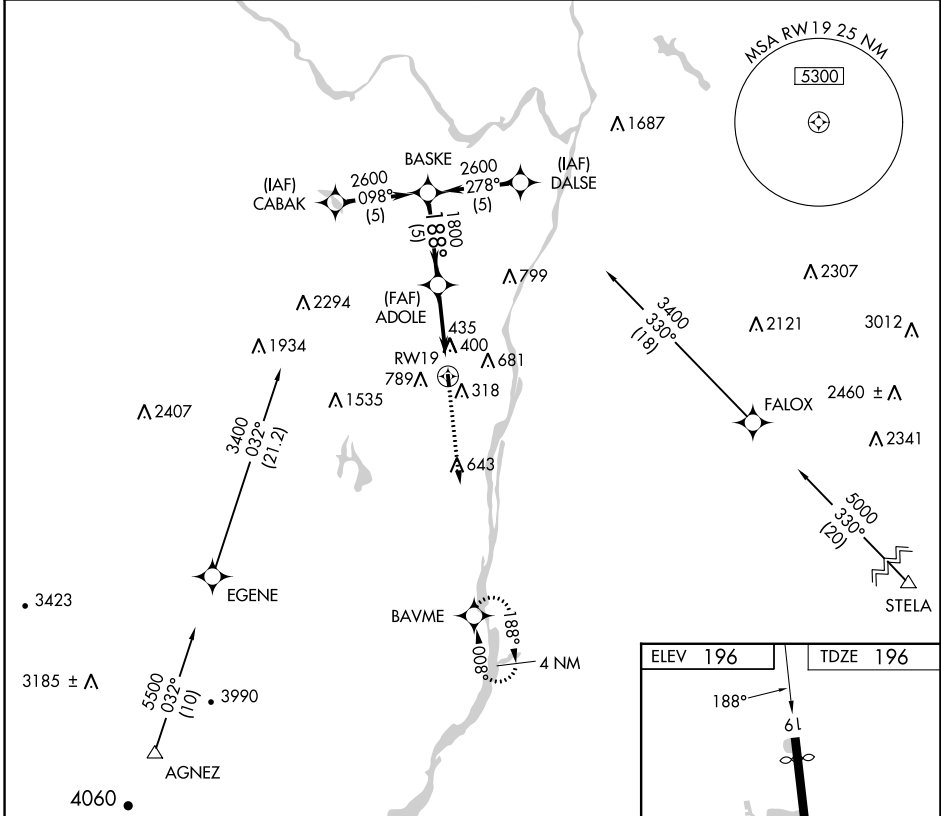
SOUTH ALBANY (4B0)

RNP APCH.  
 ▼ Use Albany Intl altimeter setting. Procedure NA at night.  
 ▲ NA Rwy 19 helicopter visibility reduction below 1 SM NA.

MISSED APPROACH: Climb to 3000 direct BAVME WP and hold.

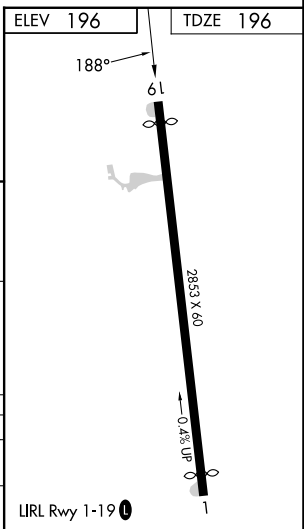
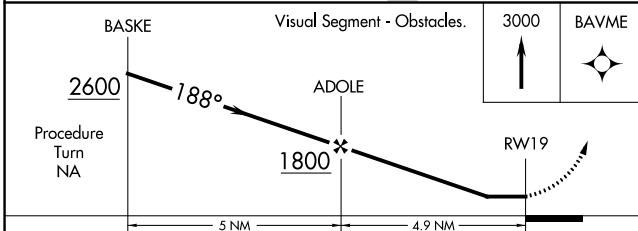
ALBANY APP CON  
**118.05 263.075**

CTAF  
**122.9 0**



NE-2, 28 NOV 2024 to 26 DEC 2024

NE-2, 28 NOV 2024 to 26 DEC 2024



CATEGORY	A	B	C	D
LNAV MDA	740-1	544 (600-1)	NA	
CIRCLING	840-1 644 (700-1)	1180-1½ 984 (1000-1½)	NA	