

APP CRS	Rwy Idg	4498
253°	TDZE	2241
	Apt Elev	2241

RNAV (GPS) RWY 25

JOHNSON COUNTY (6A.4)

RNP APCH - GPS.

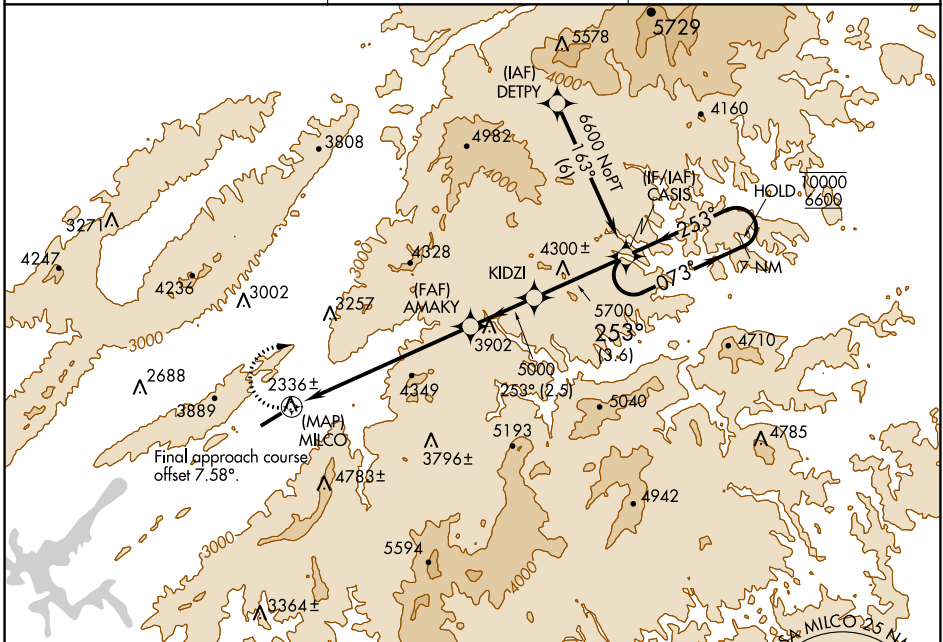
▼ Rwy 25 helicopter visibility reduction below 1 SM NA. Circling NA for Cats C and D south of Rwy 7-25. When local altimeter setting not received, use Abingdon altimeter setting and increase all MDAs 80 feet. Procedure NA at night.

MISSED APPROACH:
Climbing right turn to 6600 direct CASIS and hold.

AWOS-3
126.225

TRI-CITY APP CON ★
134.425 349.0

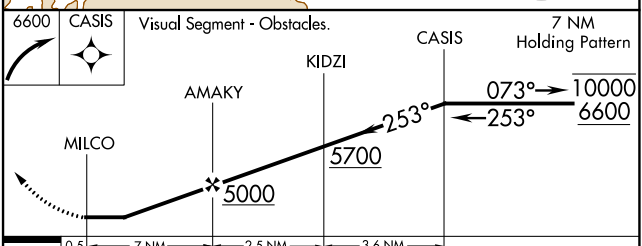
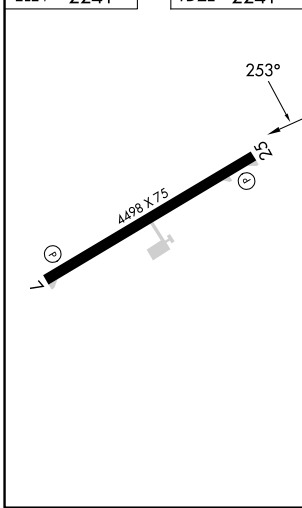
UNICOM
122.7 (CTAF)



SE-1, 28 NOV 2024 to 26 DEC 2024

SE-1, 28 NOV 2024 to 26 DEC 2024

ELEV	2241	TDZE	2241
------	------	------	------



CATEGORY	A	B	C	D
LNAV MDA	4880-1¼ 2639 (2700-1¼)	4880-1½ 2639 (2700-1½)	4880-3 2639 (2700-3)	
CIRCLING	4880-1¼ 2639 (2700-1¼)	4880-1½ 2639 (2700-1½)	4880-3 2639 (2700-3)	