

WAAS CH <b>40131</b> <b>W05A</b>	APP CRS <b>050°</b>	Rwy Idg TDZE Apt Elev	<b>4099</b> <b>584</b> <b>584</b>
--	------------------------	-----------------------------	---

# RNAV (GPS) RWY 5

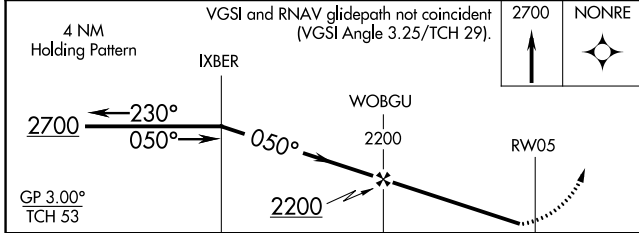
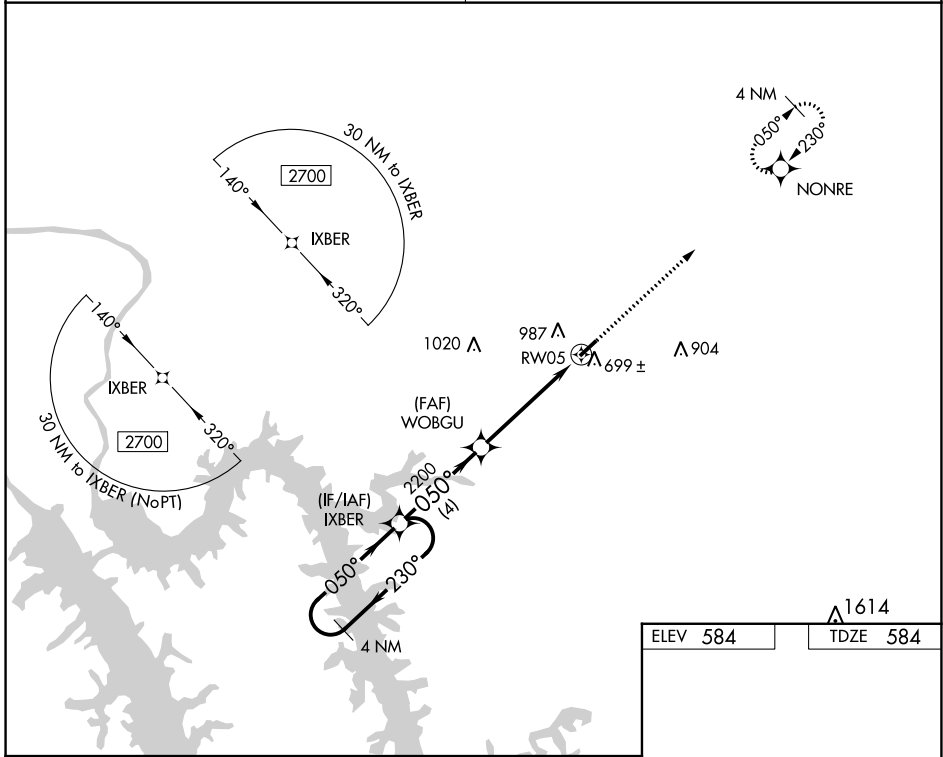
PRINCETON-CALDWELL COUNTY (2M $\emptyset$ )

**Baro-VNAV NA.** Use Campbell AAF (Fort Campbell) altimeter setting; when not received, use Madisonville Rgnl altimeter setting and increase all DA 6 feet and all MDA 20 feet.  
**NA** Increase LPV all Cats visibility 1/8 mile. DME/DME RNP-0.3 NA. Helicopter visibility reduction below 3/4 SM NA.

**MISSED APPROACH:**  
Climb to 2700 direct NONRE and hold.

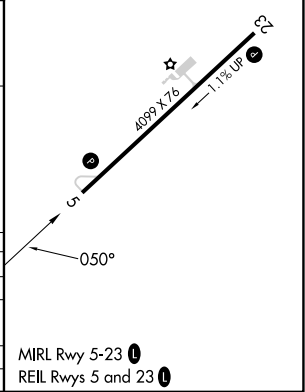
CAMPBELL APP CON  
**118.1 269.525**

UNICOM  
**122.8 (CTAF)  $\emptyset$**



ELEV 584	TDZE 584
----------	----------

CATEGORY	A	B	C	D
LPV DA	909-1	325 (400-1)		NA
RNAV/VNAV DA	936-1 1/8	352 (400-1 1/8)		NA
RNAV MDA	1040-1	456 (500-1)		NA
CIRCLING	1420-1 1/4	836 (900-1 1/4)		NA



SE-1, 28 NOV 2024 to 26 DEC 2024

SE-1, 28 NOV 2024 to 26 DEC 2024