

APP CRS	Rwy Idg	4795
235°	TDZE	1270
	Apt Elev	1270

RNAV (GPS) RWY 23

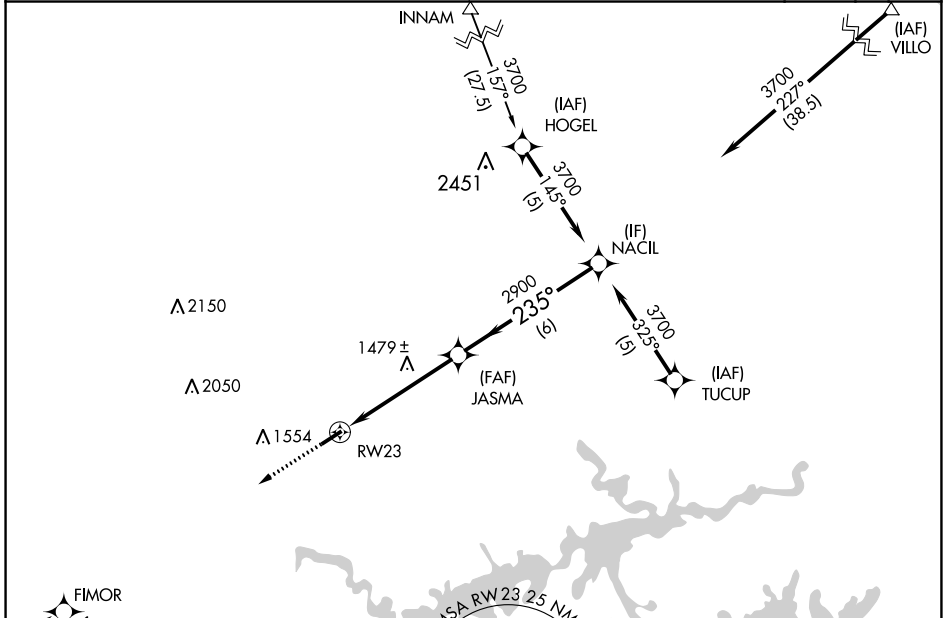
HOLLEY MOUNTAIN AIRPARK (2A2)

RNP APCH - GPS.

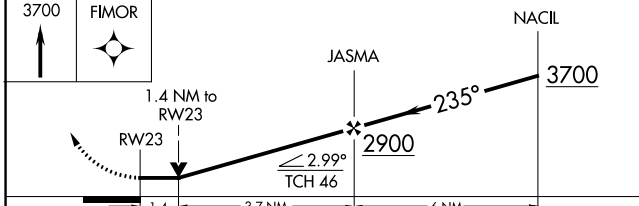
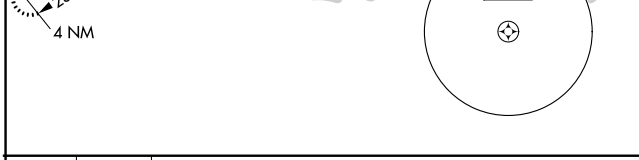
⚠ NA Rwy 23 helicopter visibility reduction below $\frac{3}{4}$ SM NA. Obtain local altimeter setting on CTAF; when not received, use Marion County Rgnl altimeter setting and increase all MDAs 180 feet and LNAV visibility Cat C $\frac{1}{2}$ SM, and Circling Cat C visibility $\frac{3}{4}$ SM. Circling Rwy 5 NA at night. VDP NA when using Marion County Rgnl altimeter setting.

MISSED APPROACH: Climb to 3700 direct FIMOR and hold.

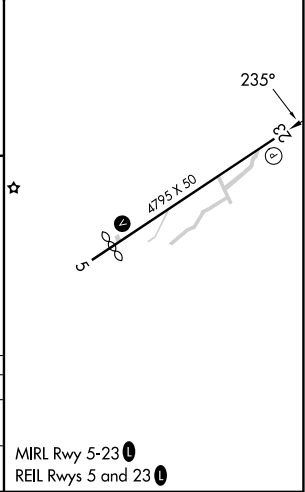
MEMPHIS CENTER **126.85 281.55** UNICOM **122.7 (CTAF)**



ELEV 1270 TDZE 1270



CATEGORY	A	B	C	D
LNAV MDA	1740-1	470 (500-1)	1740-1 $\frac{3}{8}$ 470 (500-1 $\frac{3}{8}$)	NA
CIRCLING	1800-1	530 (600-1)	1860-1 $\frac{1}{2}$ 590 (600-1 $\frac{1}{2}$)	NA



MIRL Rwy 5-23
REIL Rwy 5 and 23