

APP CRS	Rwy Idg	4397
055°	TDZE	1270
	Apt Elev	1270

RNAV (GPS) RWY 5

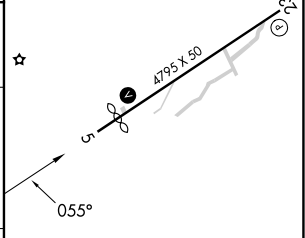
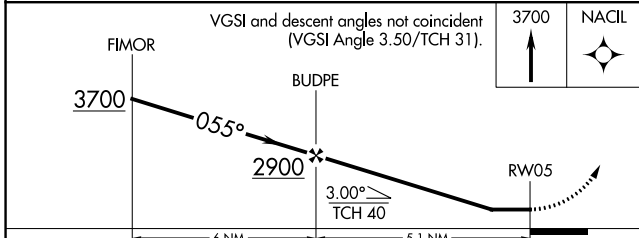
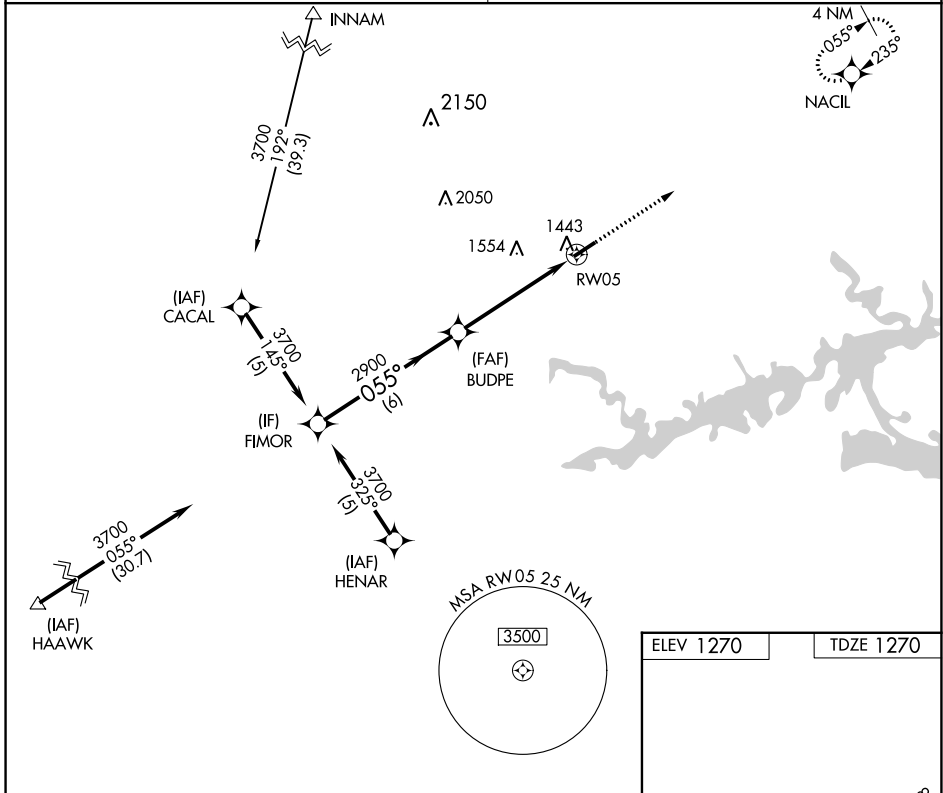
HOLLEY MOUNTAIN AIRPARK (2A2)

RNP APCH - GPS.

▼ Rwy 5 helicopter visibility reduction below 1 SM NA. Straight-in Rwy 5 NA at night, Circling Rwy 5 NA at night. Obtain local altimeter setting on CTA#; when not received, use Marion County Rgnl altimeter setting and increase all MDA's 180 feet and LNAV visibilities Cat C ½ SM, and Circling visibility Cat C ¾ SM.

▲ NA MISSED APPROACH: Climb to 3700 direct NACIL and hold.

MEMPHIS CENTER 126.85 281.55	UNICOM 122.7 (CTAF) 0
--	--



	6 NM		5.1 NM	
CATEGORY	A	B	C	D
LNAV MDA	1760-1	490 (500-1)	1760-1 3/8 490 (500-1 3/8)	NA
CIRCLING	1800-1	530 (600-1)	1860-1 1/2 590 (600-1 1/2)	NA

ELEV 1270 TDZE 1270

MIRL Rwy 5-23 **0**
REIL Rwy 5 and 23 **0**

SC-1, 28 NOV 2024 to 26 DEC 2024

SC-1, 28 NOV 2024 to 26 DEC 2024