

WAAS CH <b>82040</b> <b>W35A</b>	APP CRS <b>348°</b>	Rwy Idg TDZE <b>388</b> Apt Elev <b>389</b>	<b>5005</b>
--	------------------------	---	-------------

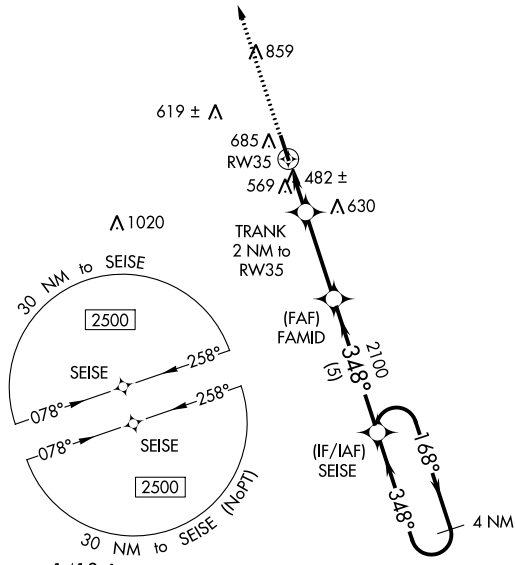
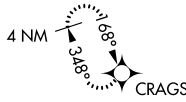
# RNAV (GPS) RWY 35

TURNER COUNTY (75J)

**▽** When Fitzgerald altimeter setting not received, procedure NA.  
**△ NA** Rwy 35 helicopter visibility reduction below 1 SM NA.  
 DME/DME RNP-0.3 NA. Procedure NA at night.

MISSED APPROACH: Climb to 2500 direct CRAGS and hold.

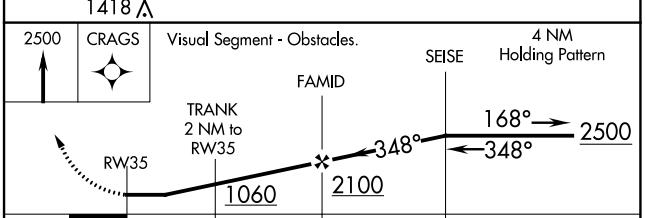
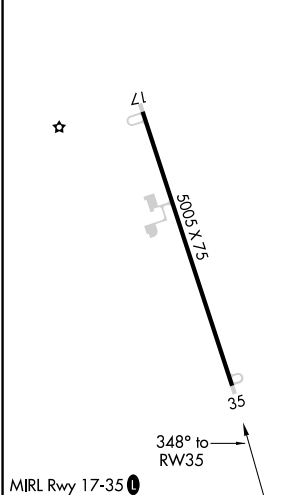
FZG AWOS-3 <b>118.625</b>	JACKSONVILLE CENTER <b>125.75 363.075</b>	UNICOM <b>122.7 (CTAF) 0</b>
------------------------------	--	---------------------------------



SE-4, 28 NOV 2024 to 26 DEC 2024

SE-4, 28 NOV 2024 to 26 DEC 2024

ELEV <b>389</b>	TDZE <b>388</b>
-----------------	-----------------



CATEGORY	A	B	C	D
LP MDA	780-1	392 (400-1)	780-1 $\frac{1}{8}$	392 (400-1 $\frac{1}{8}$ )
LNAV MDA	880-1	492 (500-1)	880-1 $\frac{3}{8}$	492 (500-1 $\frac{3}{8}$ )
<b>C</b> CIRCLING	1100-1	711 (800-1)	1140-2 $\frac{1}{4}$ 751 (800-2 $\frac{1}{4}$ )	1260-2 $\frac{3}{4}$ 871 (900-2 $\frac{3}{4}$ )