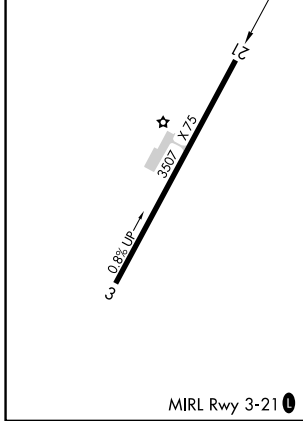
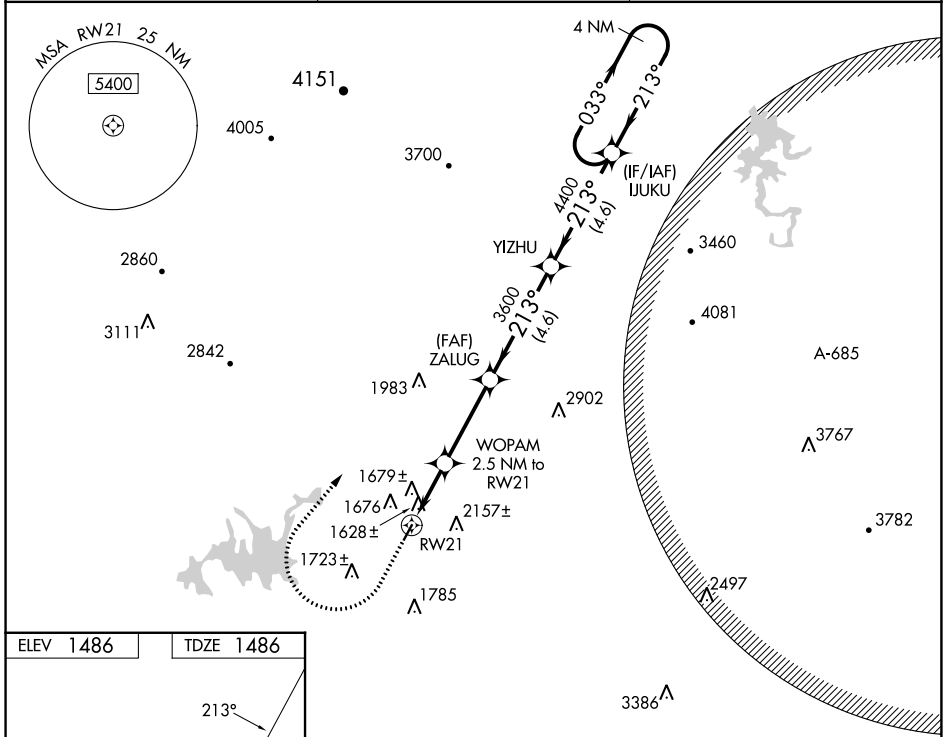


WAAS CH <b>86641</b> <b>W21A</b>	APP CRS <b>213°</b>	Rwy Idg TDZE <b>1486</b> Apt Elev <b>1486</b>	<b>3507</b>
--	------------------------	---	-------------

# RNAV (GPS) RWY 21

GILMER COUNTY (49A)

RNP APCH.		MISSED APPROACH: Climb to 2500 then climbing right turn to 5600 direct IJUKU and hold, continue climb-in-hold to 5600.
⚠ Rwy 21 helicopter visibility reduction below 1 SM NA. Procedure NA at night.		
AWOS-3 <b>118.075</b>	ATLANTA CENTER <b>133.1 342.425</b>	UNICOM <b>123.0 (CTAF)</b>



2500	5600	IJUKU	IJUKU	4 NM Holding Pattern
WOPAM 2.5 NM to RWY 21		ZALUG	YIZHU	IJUKU
RWY 21	2400	3600	4400	5600
	2.5 NM	3.4 NM	4.6 NM	4.6 NM
CATEGORY	A	B	C	D
LP MDA	1880-1	394 (400-1)	1880-1½	394 (400-1½)
LNAV MDA	1940-1	454 (500-1)	1940-1¾	454 (500-1¾)
CIRCLING	1980-1 494 (500-1)	2560-1½ 1074 (1100-1½)	2560-3	1074 (1100-3)

SE-4, 28 NOV 2024 to 26 DEC 2024

SE-4, 28 NOV 2024 to 26 DEC 2024