

APP CRS	Rwy Idg	N/A
290°	TDZE	N/A
	Apt Elev	2254

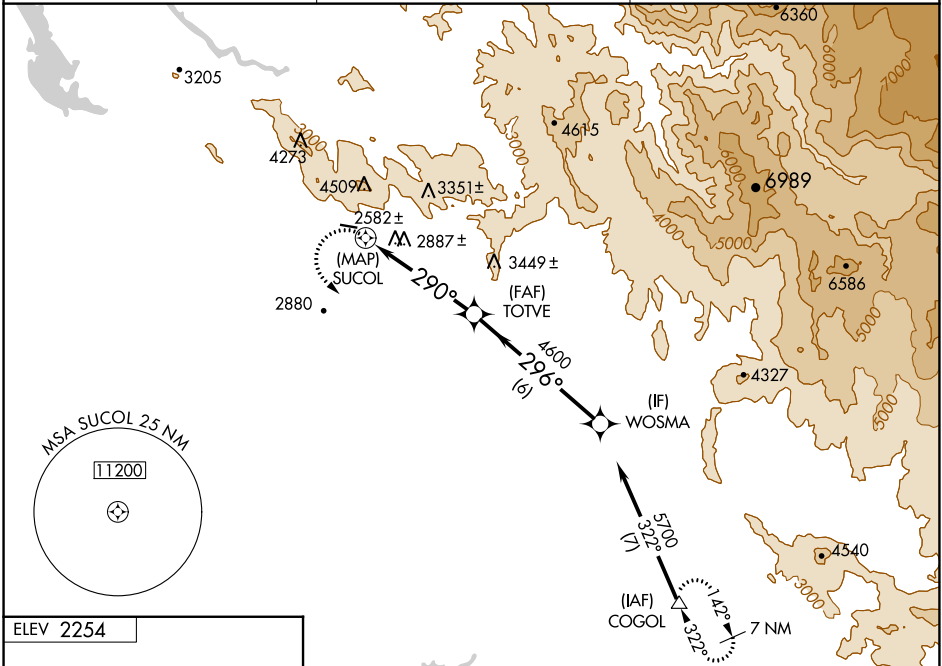
RNAV (GPS)-A

MARIPOSA-YOSEMITE (MPI)

▽ DME/DME RNP-0.3 NA.
△ NA Circling NA north of Rwy 8-26. Procedure NA at night. When local altimeter setting not received, use Atwater altimeter setting and increase all MDA 360 feet.

MISSED APPROACH: Climbing left turn to 7000 direct COGOL and hold.

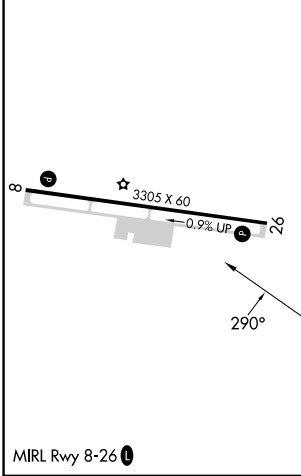
AWOS-3 135.6	OAKLAND CENTER 121.25 327.0	UNICOM 122.7 (CTAF) ①
------------------------	---------------------------------------	---------------------------------



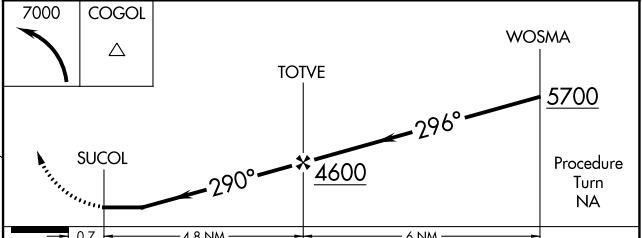
SW-2, 28 NOV 2024 to 26 DEC 2024

SW-2, 28 NOV 2024 to 26 DEC 2024

ELEV 2254



Procedure NA for arrival at COGOL via V459 southeast bound.



CATEGORY	A	B	C	D
ⓐ CIRCLING	3900-1¼ 1646 (1700-1¼)	3900-1½ 1646 (1700-1½)	NA	