

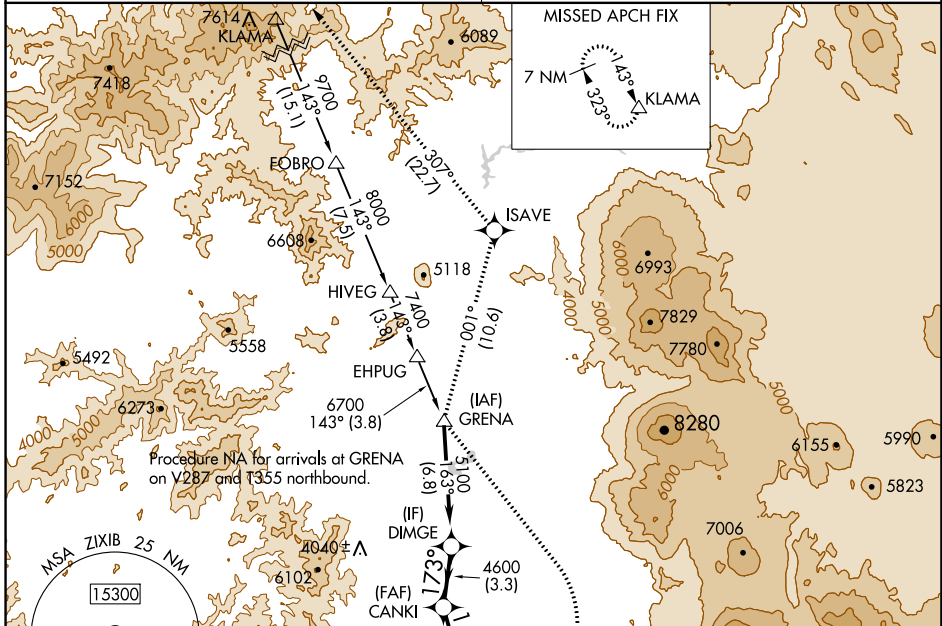
APP CRS	Rwy Idg	5000
150°	TDZE	2934
	Apt Elev	2943

RNAV (GPS) RWY 14

WEED (O46)

RNP APCH - GPS.	MISSED APPROACH: (Do not exceed 185K until GRENA) Climbing left turn to 9100 direct GRENA then on track 001° to ISAVE then on track 307° to KLAMA and hold.
<p>NA Circling NA southwest of Rwy 14-32.</p> <p>NA Use Montague altimeter setting.</p>	*Missed approach requires minimum climb of 325 feet per NM to 4000.

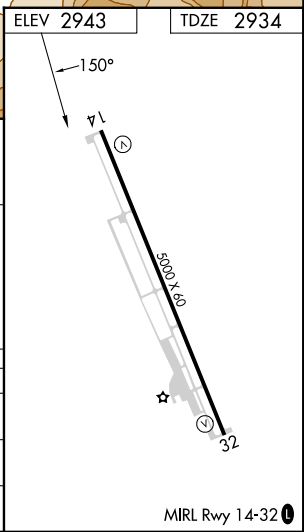
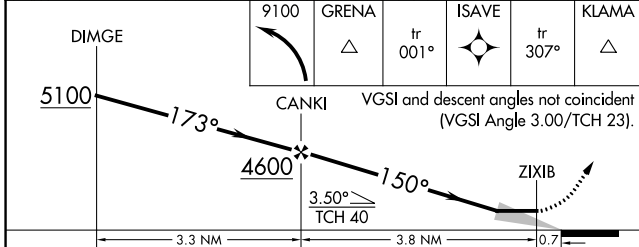
SEATTLE CENTER 124.85 306.3	UNICOM 122.7 (CTAF)
---------------------------------------	-------------------------------



SW-2, 28 NOV 2024 to 26 DEC 2024

SW-2, 28 NOV 2024 to 26 DEC 2024

ELEV 2943	TDZE 2934
-----------	-----------



CATEGORY	A	B	C	D
RNAV MDA*	3440-1	506 (500-1)	3580-1 7/8 646 (700-1 7/8)	3700-2 1/2 766 (800-2 1/2)
RNAV MDA	3440-1 506 (500-1)	3480-1 546 (600-1)	3780-2 1/2 846 (900-2 1/2)	3820-2 1/2 886 (900-2 1/2)
C CIRCLING	3680-1 737 (800-1)	3840-1 1/4 897 (900-1 1/4)	4220-3 1277 (1300-3)	4440-3 1497 (1500-3)

MIRL Rwy 14-32