

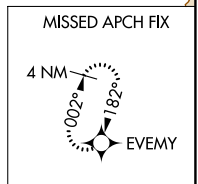
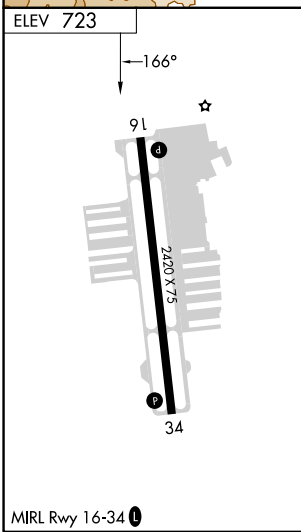
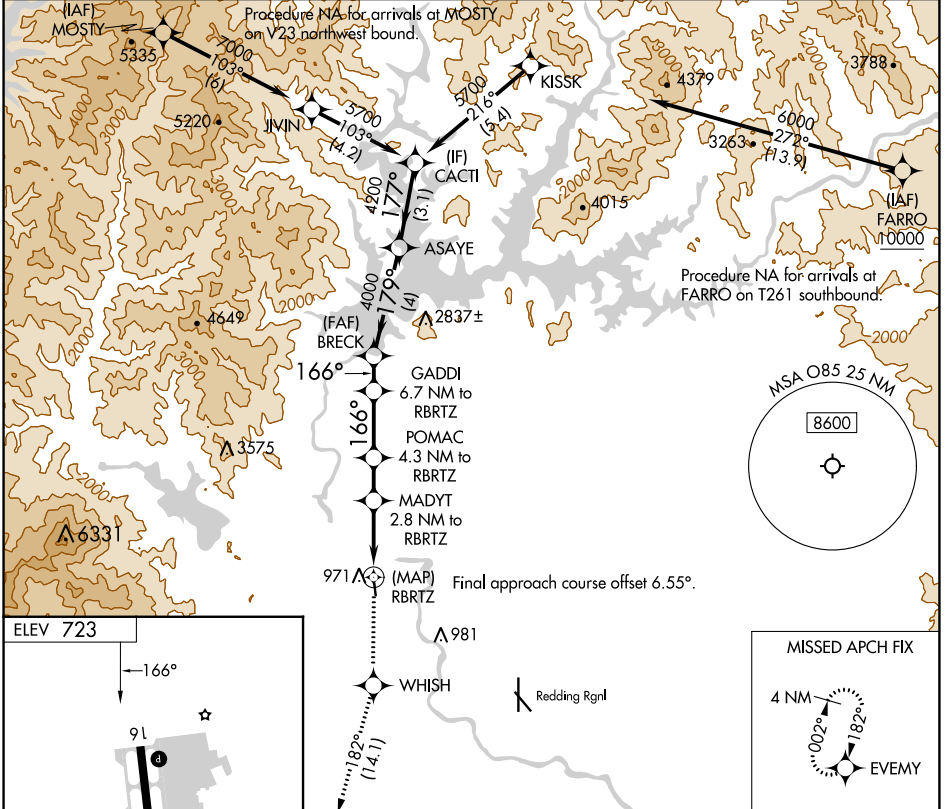
APP CRS	Rwy Idg	N/A
166°	TDZE	N/A
	Apt Elev	723

RNAV (GPS)-A

BENTON FLD (O85)

RNP APCH - GPS.	<p>MISSED APPROACH: Climb to 4000 direct WHISH and on track 182° to EVMY and hold.</p>
<p>Procedure NA at night. Rwy 16, 34 helicopter visibility reduction below 1 SM NA. When local altimeter setting not received, use Redding Rgnl altimeter setting and increase all MDAs 60 feet.</p>	

AWOS-2 118.675	OAKLAND CENTER 132.2 350.3	UNICOM 122.8 (CTAF) 0
--------------------------	--------------------------------------	---------------------------------



4000	WHISH	EVMY	VGSI and descent angles not coincident (VGSI Angle 3.50/TCH 24).		CACTI
	↑	tr 182°	GADDI 6.7 NM to RBRTZ	BRECK	ASAYE
			POMAC 4.3 NM to RBRTZ	MADYT 2.8 NM to RBRTZ	CACTI 5700
			RBRTZ	3500	4200
			1960	2560	4000
			2.8 NM	1.5 NM	2.4 NM
			1.3 NM	4 NM	3.1 NM
CATEGORY	A	B	C	D	
CIRCLING	1340-1 617 (700-1)	1600-1¼ 877 (900-1¼)	NA		

SW-2, 28 NOV 2024 to 26 DEC 2024

SW-2, 28 NOV 2024 to 26 DEC 2024