

APP CRS	Rwy Idg	N/A
<b>360°</b>	TDZE	N/A
	Apt Elev	<b>26</b>

**RNAV (GPS)-A**  
ROBERT F SWINNIE (PHH)

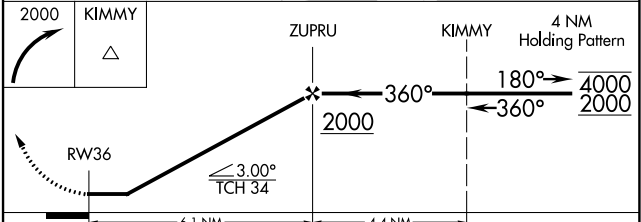
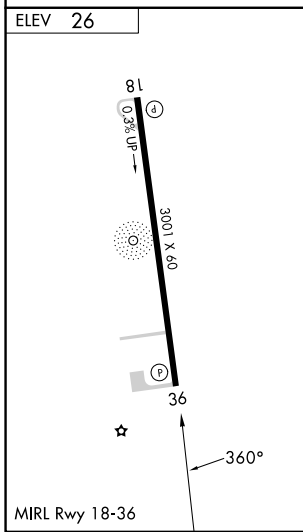
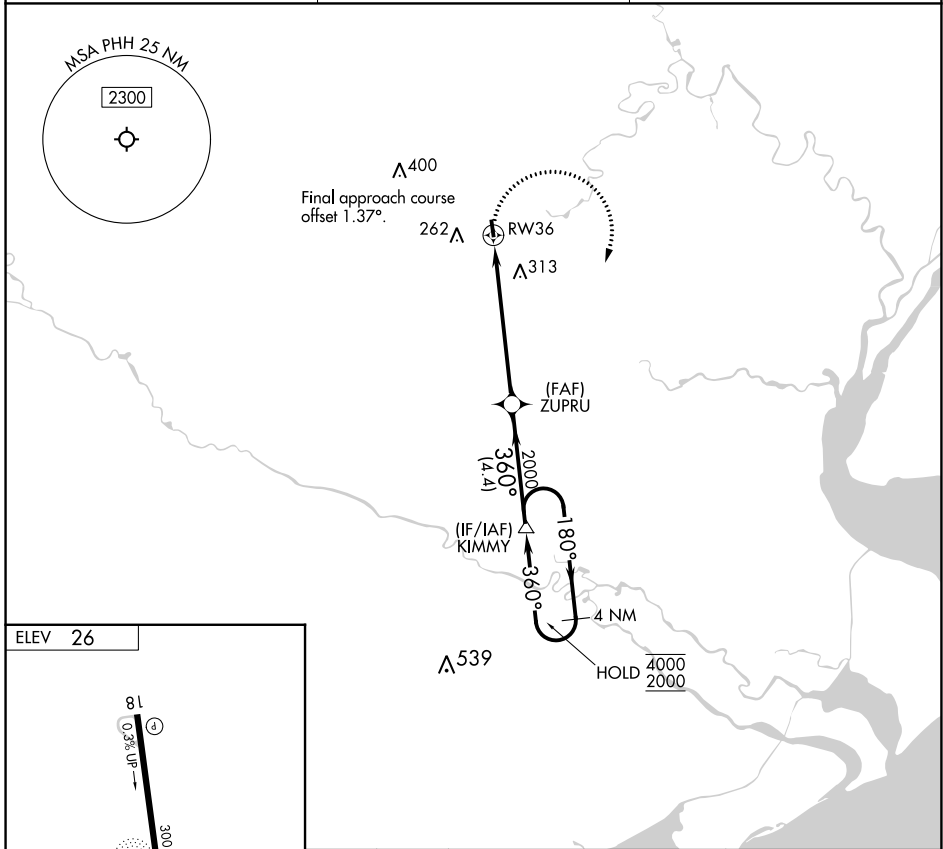
RNP APCH - GPS.  
 Procedure NA at night.  
 Rwy 18, 36 helicopter visibility reduction below 1 SM NA.  
 Use Myrtle Beach altimeter setting.

MISSED APPROACH: Climbing right turn to 2000 direct KIMMY and hold.

MYR AWOS-3PT  
**123.925**

MYRTLE BEACH APP CON ★  
**127.4 257.95**

CTAF  
**122.9**



CATEGORY	A	B	C	D
☑ CIRCLING	560-1 534 (600-1)	700-1 674 (700-1)	NA	

SE-2, 28 NOV 2024 to 26 DEC 2024

SE-2, 28 NOV 2024 to 26 DEC 2024