

WAAS CH <b>56241</b> <b>W21A</b>	APP CRS <b>207°</b>	Rwy Idg TDZE Apt Elev	<b>3320</b> <b>25</b> <b>30</b>
--	------------------------	-----------------------------	---------------------------------------

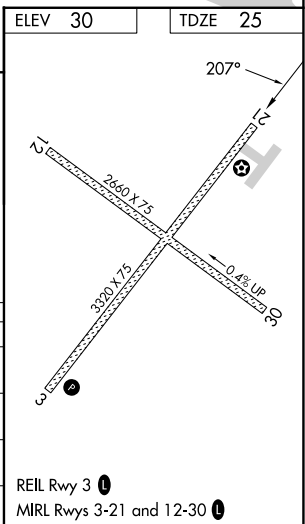
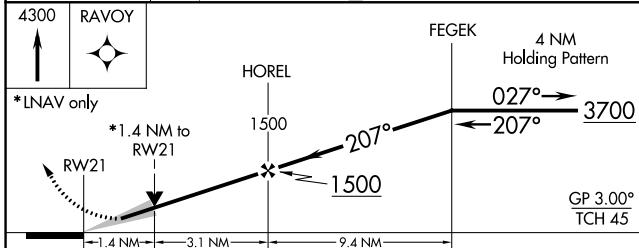
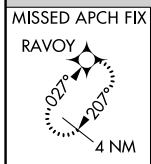
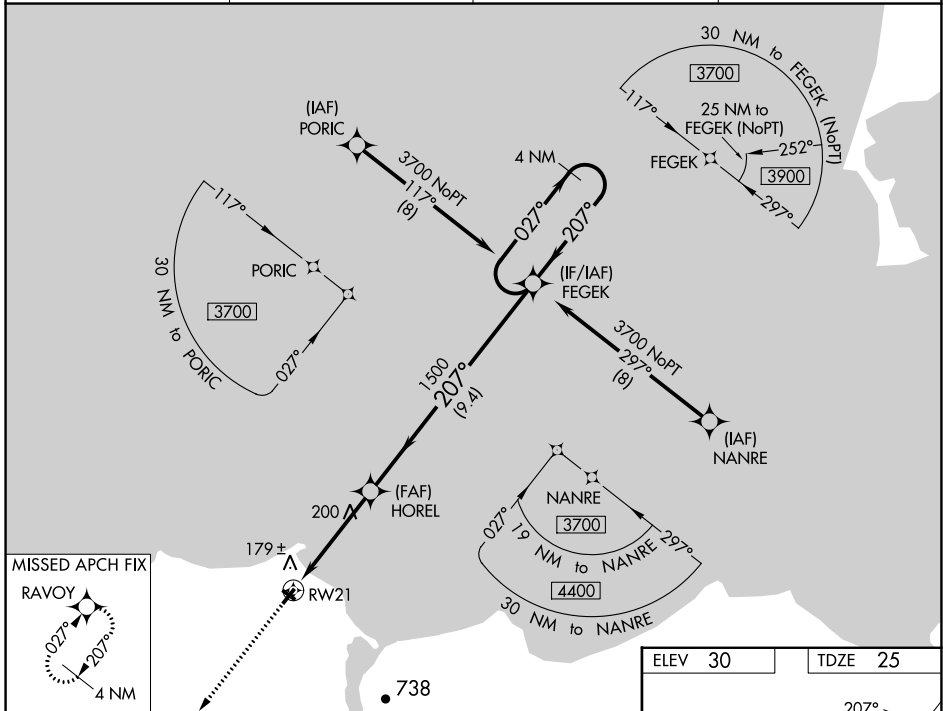
# RNAV (GPS) RWY 21

DEERING (DEE)(PADE)

**⚠** Circling to Rwy 12, 30 NA at night. For uncompensated Baro-VNAV systems, LNAV/VNAV NA below -19°C (-2°F) or above -39°C (-39°F). DME/DME RNP-0.3 NA.

**⚠** MISSED APPROACH: Climb to 4300 direct RAVOY and hold, continue climb-in-hold to 4300.

ASOS <b>135.5</b>	ANCHORAGE CENTER <b>119.2 263.0</b>	KOTZEBUE RADIO <b>122.25</b>	CTAF <b>122.9</b>
----------------------	--	---------------------------------	----------------------



CATEGORY	A	B	C	D
LPV DA	275-1	250 (300-1)		NA
LNAV/VNAV DA	332-1	307 (400-1)		NA
LNAV MDA	500-1	475 (500-1)	500-1 3/8 475 (500-1 3/8)	NA
<b>C</b> CIRCLING	680-1 650 (700-1)	840-1 810 (900-1)	840-2 1/4 810 (900-2 1/4)	NA

AK, 31 OCT 2024 to 26 DEC 2024

AK, 31 OCT 2024 to 26 DEC 2024