

APP CRS	Rwy Idg	2660
296°	TDZE	30
	Apt Elev	30

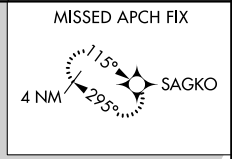
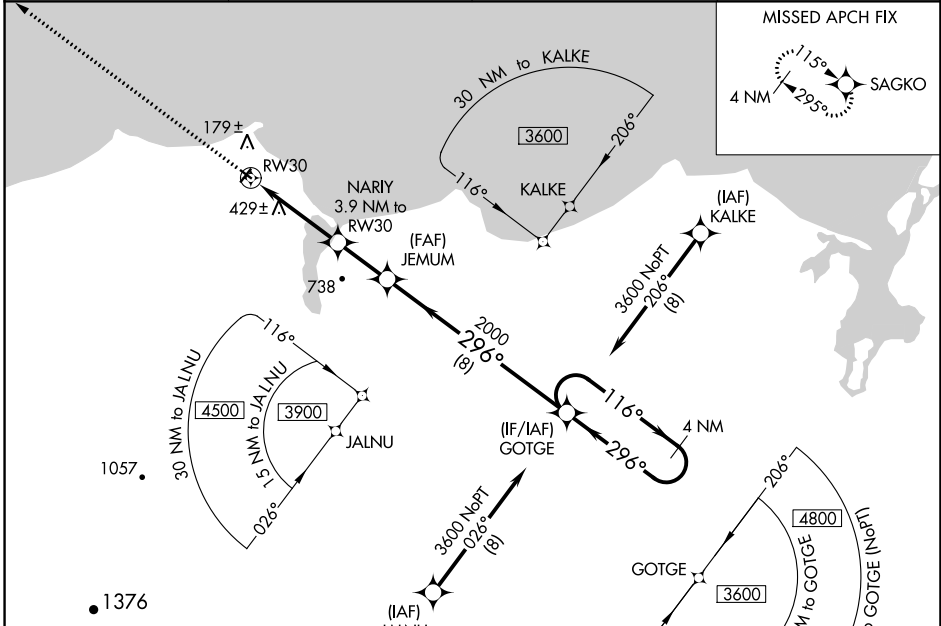
RNAV (GPS) RWY 30

DEERING (DEE)(PADE)

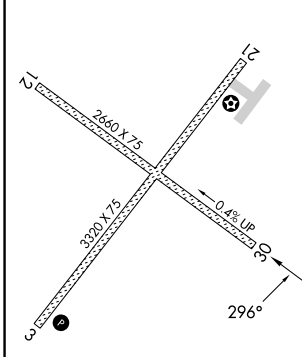
⚠ DME/DME RNP-0.3 NA.
⚠ Rwy 30 helicopter visibility reduction below 1 SM NA.
⚠ -39°C Straight-in Rwy 12 NA at night, Circling Rwy 12, 30 NA at night.

MISSED APPROACH: Climb to 3000 direct SAGKO and hold.

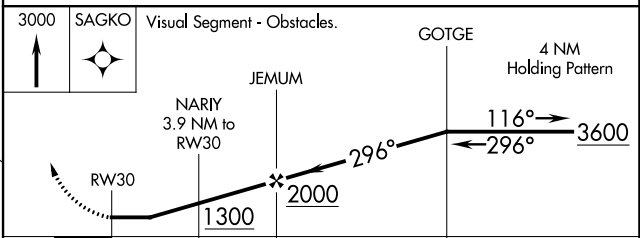
ASOS 135.5	ANCHORAGE CENTER 119.2 263.0	KOTZEBUE RADIO 122.25	CTAF 122.9 0
----------------------	--	---------------------------------	------------------------



ELEV 30	TDZE 30
---------	---------



REIL Rwy 3 **0**
 MIRL Rwy 3-21 and 12-30 **0**



CATEGORY	A	B	C	D
INAV MDA	740-1	710 (800-1)	740-2 710 (800-2)	NA
C CIRCLING	740-1 710 (800-1)	840-1 810 (900-1)	840-2¼ 810 (900-2¼)	NA

AK, 31 OCT 2024 to 26 DEC 2024

AK, 31 OCT 2024 to 26 DEC 2024