

|  |                        |   |
|--|------------------------|---|
| WAAS<br>CH <b>49134</b><br><b>W03A</b> | APP CRS<br><b>035°</b> | Rwy Idg <b>3398</b><br>TDZE <b>941</b><br>Apt Elev <b>943</b> |
|--|------------------------|---|

# RNAV (GPS) RWY 3

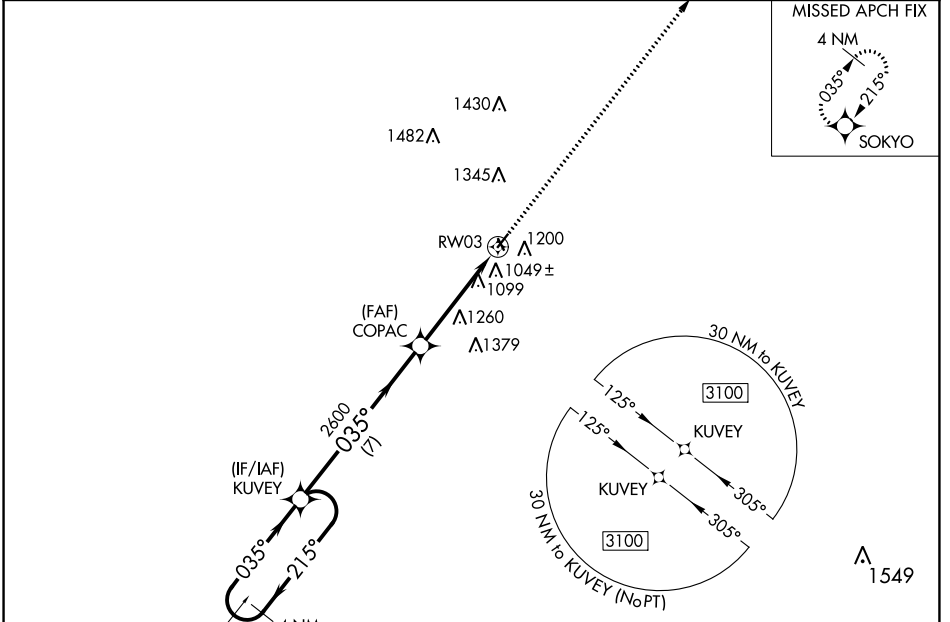
MIAMI COUNTY (K81)

RNP APCH - GPS.

**NA** Baro-VNAV NA. Use New Century Aircenter altimeter setting; when not received, use Johnson County Exec altimeter setting and increase all DA 8 feet and all MDA 20 feet. Rwy 3 helicopter visibility reduction below 3/4 SM NA. Circling NA to Rwy 15 and 33.

MISSED APPROACH: Climb to 3100 direct SOKYO and hold.

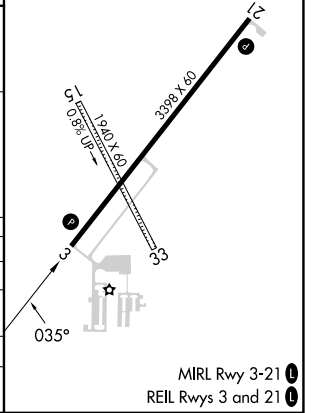
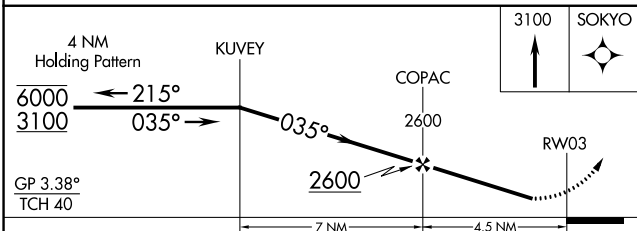
|                            |   |                                 |
|----------------------------|---|---------------------------------|
| IXD ASOS<br><b>135.325</b> | KANSAS CITY APP CON<br><b>118.9 251.075</b> | UNICOM<br><b>122.8 (CTAF) 0</b> |
|----------------------------|---|---------------------------------|



NC-2, 28 NOV 2024 to 26 DEC 2024

NC-2, 28 NOV 2024 to 26 DEC 2024

|          |          |
|----------|----------|
| ELEV 943 | TDZE 941 |
|----------|----------|



| CATEGORY          | A      | B           | C | D  |
|-------------------|--------|-------------|---|----|
| LPV DA            | 1284-1 | 343 (400-1) |   | NA |
| LNNAV/VNAV DA     | 1274-1 | 333 (400-1) |   | NA |
| LNNAV MDA         | 1640-1 | 699 (700-1) |   | NA |
| <b>C</b> CIRCLING | 1640-1 | 697 (700-1) |   | NA |

MIRL Rwy 3-21 **0**  
REIL Rwy 3 and 21 **0**