

RNAV (GPS) Y RWY 32

BETHEL RGNL (ØB1)

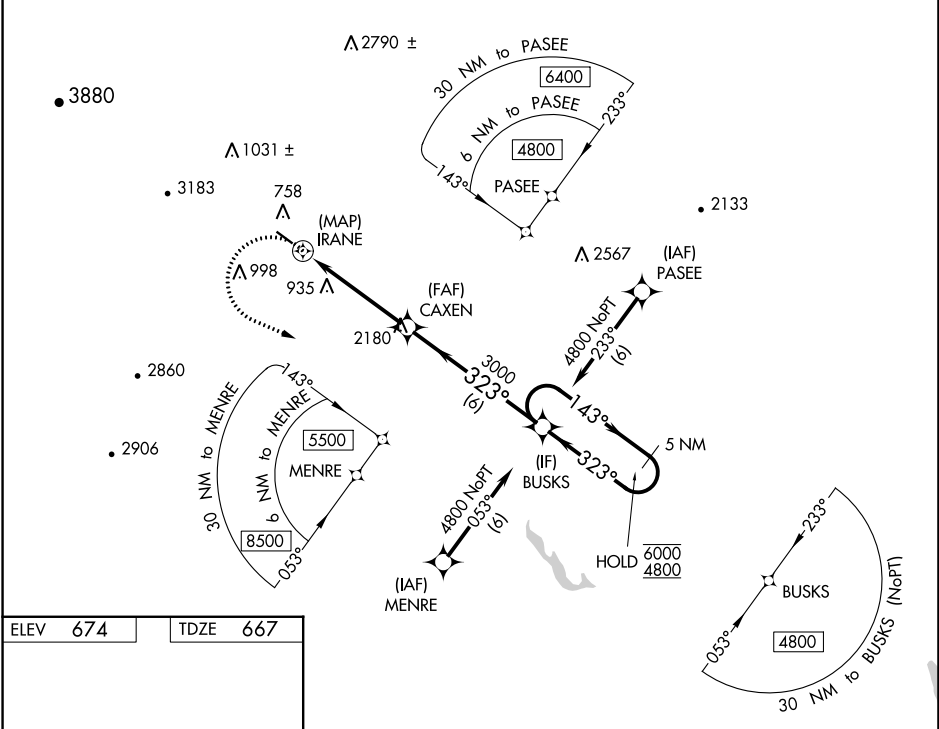
| | | |
|-------------|----------|-------------|
| APP CRS | Rwy Idg | 3818 |
| 323° | TDZE | 667 |
| | Apt Elev | 674 |

RNP APCH-GPS.

NA Circling Rwy 14 NA at night. Rwy 32 helicopter visibility reduction below 3/4 SM NA. When local altimeter setting not received, use Augusta altimeter setting and increase all MDAs 160 feet. Caution any go-around after passing IRANE, may not provide standard obstacle clearance. VDP NA when using Augusta State altimeter setting.

MISSED APPROACH: Climbing left turn to 4800 direct BUSKS and hold, continue climb-in-hold to 4800.

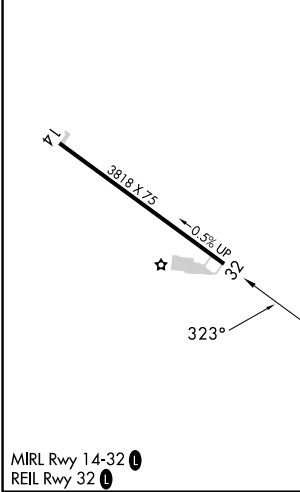
| | | |
|----------------|---------------------|---------------|
| AWOS-AV | PORTLAND APP CON* | CTAF |
| 119.075 | 125.5 269.35 | 122.90 |



NE-1, 28 NOV 2024 to 26 DEC 2024

NE-1, 28 NOV 2024 to 26 DEC 2024

| | | | |
|------|------------|------|------------|
| ELEV | 674 | TDZE | 667 |
|------|------------|------|------------|



| | | | | | |
|-------------------|---------------------------|---------------------------|-------------|---|--|
| 4800 | BUSKS | 5 NM Holding Pattern | | | |
| | | | | | |
| | | | | | |
| IRANE | CAXEN | BUSKS | | | |
| 1.8 NM to IRANE | 3000 | 143° → 6000 | ← 323° 4800 | | |
| 0.5 | 1.8 NM | 2.8 NM | 6 NM | | |
| CATEGORY | A | B | C | D | |
| LNAV MDA | 1740-1¼ 1073 (1100-1¼) | 1740-1½ 1073 (1100-1½) | NA | | |
| C CIRCLING | 1740-1¼ 1066 (1100-1¼) | 2260-1½ 1586 (1600-1½) | NA | | |