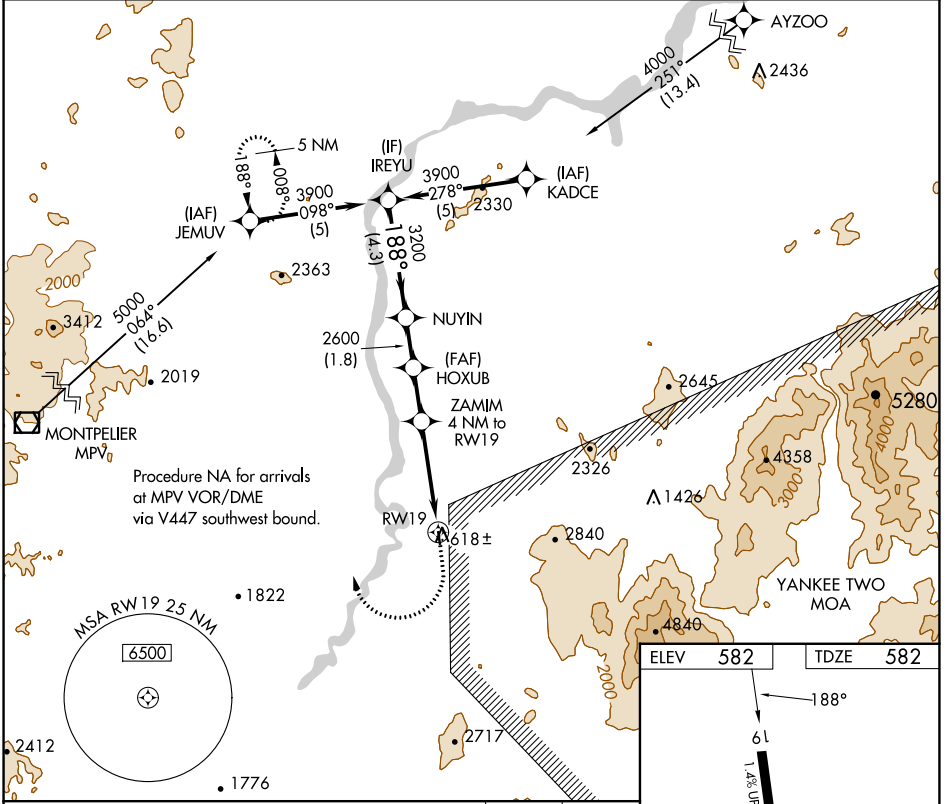


APP CRS	Rwy Idg	2511
188°	TDZE	582
	Apt Elev	582

RNAV (GPS) RWY 19

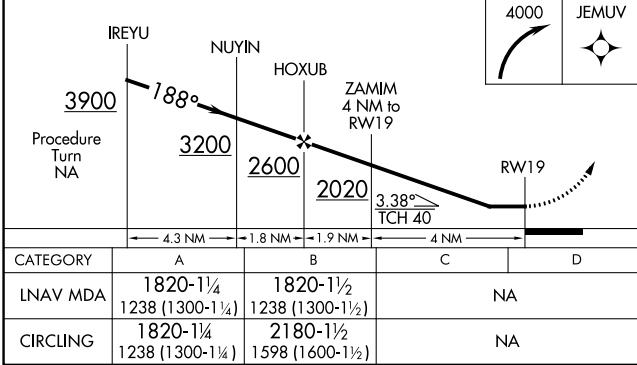
DEAN MEML (5B9)

<p>NA DME/DME RNP-0.3 NA. Procedure NA at night. Visibility reduction by helicopters NA. Use Lebanon altimeter setting; if not received, use Barre-Montpelier, VT altimeter setting and increase all MDAs 80 feet.</p>		<p>MISSED APPROACH: Climbing right turn to 4000 direct JEMUV and hold.</p>
LEB ASOS	BOSTON CENTER	UNICOM
118.65	135.7 282.2	122.8 (CTAF) 0



NE-1, 28 NOV 2024 to 26 DEC 2024

NE-1, 28 NOV 2024 to 26 DEC 2024



ELEV	582	TDZE	582
------	-----	------	-----

188°

61

1.43 UP

2511 X 58

1

IIRL Rwy 1-19 0