

APP CRS	Rwy Idg	<b>3220</b>
<b>024°</b>	TDZE	<b>61</b>
	Apt Elev	<b>61</b>

# RNAV (GPS) RWY 2

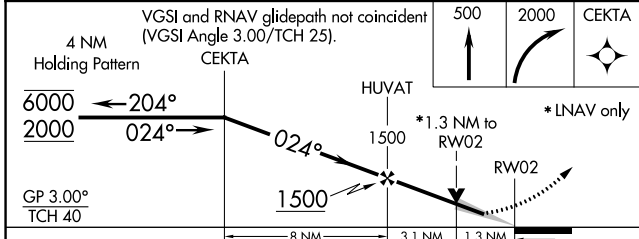
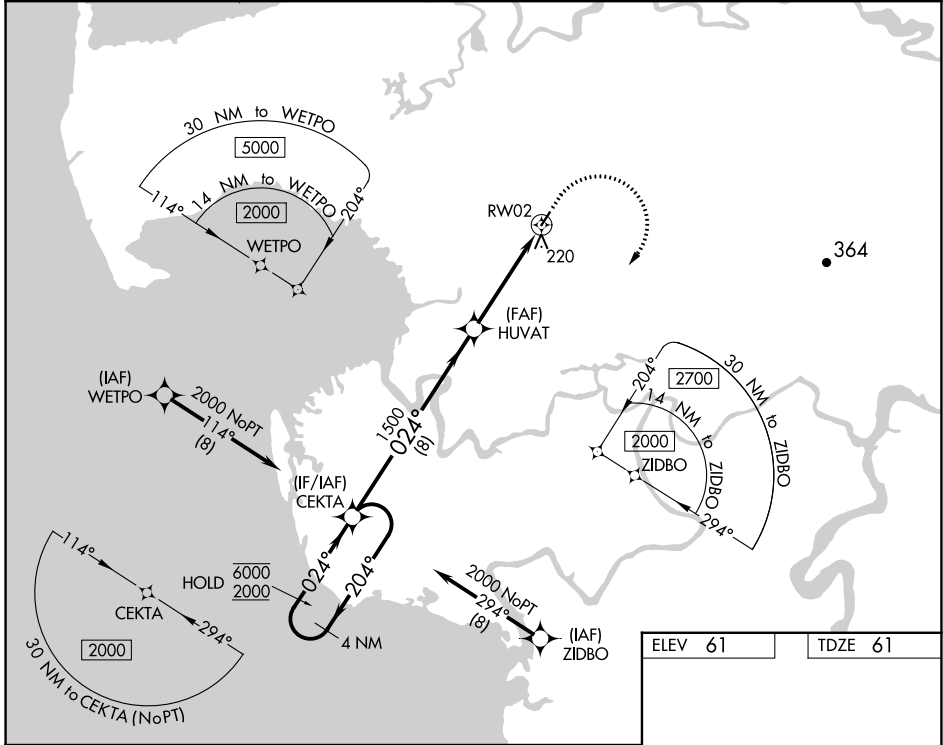
CHEVAK (VAK)(PAVA)

RNP APCH.

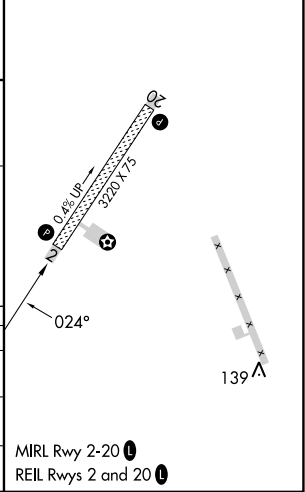
**⚠** For uncompensated Baro-VNAV systems, LNAV/VNAV NA below -22°C or above 54°C.

**MISSED APPROACH:** Climb to 500, then climbing right turn to 2000 direct CEKTA and hold.

AWOS-3P <b>120.625</b>	ANCHORAGE CENTER <b>124.5</b>	UNICOM <b>122.8</b> <b>⓪</b>	CTAF <b>123.0</b> <b>⓪</b>
---------------------------	----------------------------------	---------------------------------	-------------------------------



ELEV 61	TDZE 61
---------	---------



CATEGORY	A	B	C	D
LNAV/VNAV DA	381-1		320 (400-1)	
LNAV MDA	480-1	419 (500-1)	480-1 1/8	419 (500-1 1/8)
<b>C</b> CIRCLING	520-1	459 (500-1)	520-1 1/2 459 (500-1 1/2)	700-2 639 (700-2)

AK, 31 OCT 2024 to 26 DEC 2024

AK, 31 OCT 2024 to 26 DEC 2024