

RNAV (GPS) RWY 20

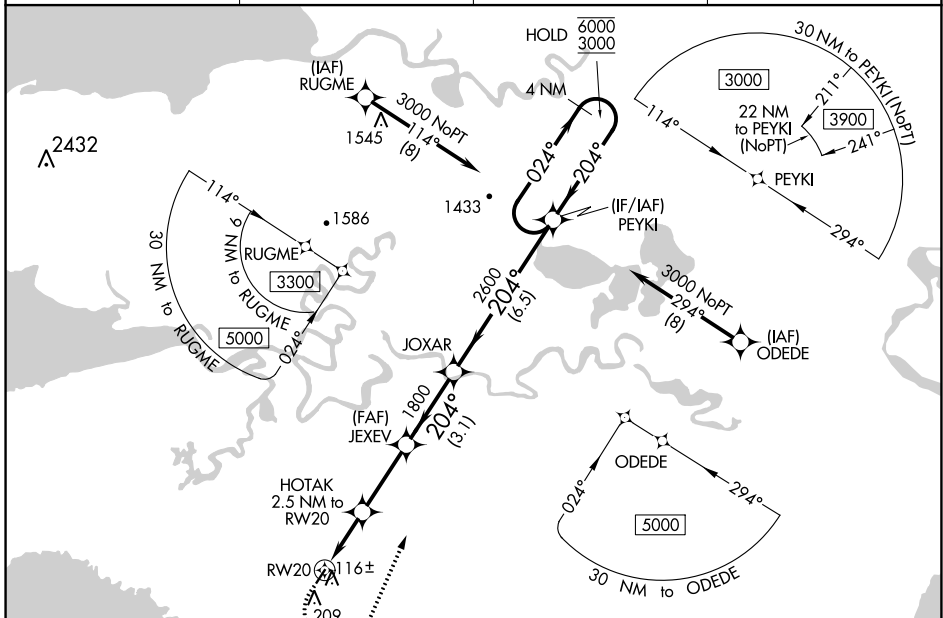
CHEVAK (VAK)(PAVA)

APP CRS	Rwy Idg	3220
204°	TDZE	61
	Apt Elev	61

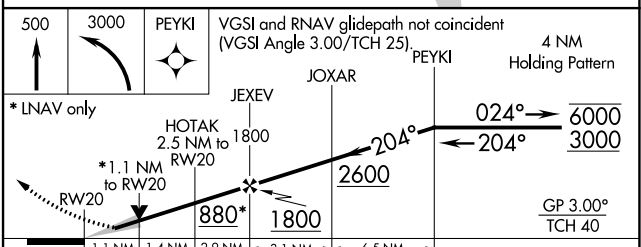
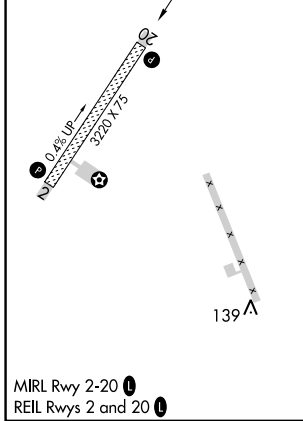
RNP APCH.
 For uncompensated Baro-VNAV systems, LNAV/VNAV NA below -20°C or above 54°C.

MISSED APPROACH: Climb to 500. Then climbing left turn to 3000 direct PEYKI and hold.

AWOS-3P 120.625	ANCHORAGE CENTER 124.5	UNICOM 122.8	CTAF 123.0
---------------------------	----------------------------------	------------------------	----------------------



ELEV 61	TDZE 61
---------	---------



CATEGORY	A	B	C	D
LNAV/VNAV DA		311-1	250 (300-1)	
LNAV MDA		420-1	359 (400-1)	
<input checked="" type="checkbox"/> CIRCLING	520-1	459 (500-1)	520-1½ 459 (500-1½)	700-2 639 (700-2)

AK, 31 OCT 2024 to 26 DEC 2024

AK, 31 OCT 2024 to 26 DEC 2024