

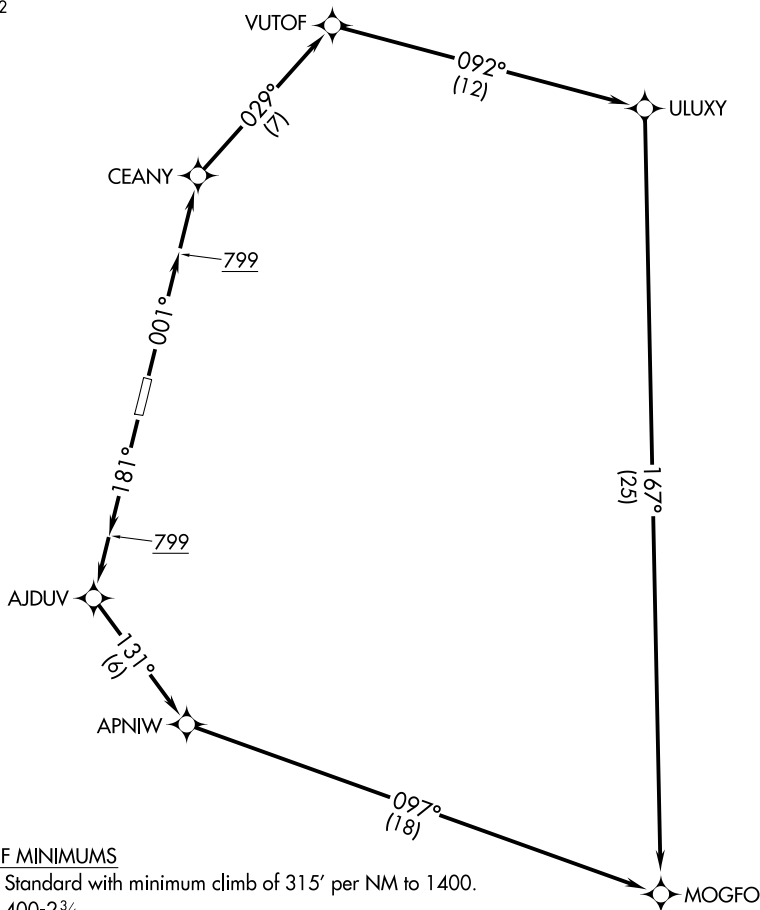
(HUGHE1.MOGFO) 21336

AL-10156 (FAA)

HUGHES (HUS)(PAHU)  
HUGHES, ALASKA

# HUGHES ONE DEPARTURE (OBSTACLE) (RNAV)

ANCHORAGE CENTER  
124.6 352



### TAKEOFF MINIMUMS

Rwy 18: Standard with minimum climb of 315' per NM to 1400.

Rwy 36: 400-2¾.

NOTE: RNAV 1.

NOTE: GPS required.

NOTE: Procedure NA at night.

NOTE: Chart not to scale.

(NOTES CONTINUED ON FOLLOWING PAGE)

### DEPARTURE ROUTE DESCRIPTION

TAKEOFF RUNWAY 18: Climb on heading 181° to 799, then direct AJDUV, then on track 131° to APNIW, then on track 097° to MOGFO, cross MOGFO at or above MEA/MCA for assigned route of flight.

TAKEOFF RUNWAY 36: Climb on heading 001° to 799, then direct CEANY, then on track 029° to VUTOF, then on track 092° to ULUXY, then on track 167° to MOGFO, cross MOGFO at or above MEA/MCA for assigned route of flight.

HUGHES ONE DEPARTURE (OBSTACLE) (RNAV)

(HUGHE1.MOGFO) 02DEC21

HUGHES, ALASKA  
HUGHES (HUS)(PAHU)

AK, 31 OCT 2024 to 26 DEC 2024

AK, 31 OCT 2024 to 26 DEC 2024

# HUGHES ONE DEPARTURE (OBSTACLE) (RNAV)

## TAKEOFF OBSTACLE NOTES

- Rwy 18: Tree 5' from DER, 205' right of centerline, 32' AGL/324' MSL.  
 Trees beginning 13' from DER, 150' right of centerline, up to 41' AGL/332' MSL.  
 Trees beginning 36' from DER, 176' left of centerline, up to 59' AGL/350' MSL.  
 Trees beginning 161' from DER, 244' left of centerline, up to 61' AGL/352' MSL.  
 Tree 187' from DER, 471' left of centerline, 61' AGL/354' MSL.  
 Trees beginning 235' from DER, 64' left of centerline, up to 65' AGL/358' MSL.  
 Trees beginning 510' from DER, 187' left of centerline, up to 68' AGL/362' MSL.  
 Tree 1484' from DER, 855' right of centerline, 51' AGL/347' MSL.  
 Tree 1886' from DER, 561' right of centerline, 54' AGL/350' MSL.  
 Tree 2187' from DER, 325' right of centerline, 54' AGL/353' MSL.  
 Trees beginning 2199' from DER, 106' right of centerline, up to 64' AGL/364' MSL..  
 Tree 2510' from DER, 16' left of centerline, 72' AGL/365' MSL.  
 Trees beginning 2524' from DER, 52' right of centerline, up to 68' AGL/370' MSL.  
 Trees beginning 2626' from DER, 168' right of centerline, up to 76' AGL/377' MSL.  
 Tree 2664' from DER, 7' left of centerline, 81' AGL/375' MSL.  
 Trees beginning 2666' from DER, 225' right of centerline, up to 78' AGL/379' MSL.
- Rwy 36: Trees, vehicles on road beginning 1' from DER, 345' right of centerline, up to 28' AGL/322' MSL.  
 Vegetation 42' from DER, 123' left of centerline, 5' AGL/301' MSL.  
 Trees beginning 76' from DER, 90' left of centerline, up to 35' AGL/318' MSL.  
 Trees, vehicles on road beginning 77' from DER, 86' right of centerline, up to 31' AGL/328' MSL.  
 Poles, trees, catenary, vehicles on road, antenna, buildings, vertical structures beginning 105' from DER, 117' right of centerline, up to 34' AGL/331' MSL.  
 Trees beginning 138' from DER, 142' left of centerline, up to 44' AGL/337' MSL.  
 Trees beginning 294' from DER, 132' left of centerline, up to 46' AGL/340' MSL.  
 Tree, vehicles on road beginning 360' from DER, 482' right of centerline, up to 47' AGL/344' MSL.  
 Trees beginning 415' from DER, 528' right of centerline, up to 49' AGL/346' MSL.  
 Trees, vehicles on road, buildings, vertical structures, poles, lighting, tower, catenary, antenna beginning 448' from DER, 198' right of centerline, up to 51' AGL/348' MSL.  
 Trees, poles, catenary beginning 1012' from DER, 277' right of centerline, up to 48' AGL/403' MSL.  
 Trees beginning 1203' from DER, 568' right of centerline, up to 63' AGL/511' MSL.  
 Trees beginning 1415' from DER, 275' right of centerline, up to 52' AGL/553' MSL.  
 Tree 1573' from DER, 760' right of centerline, 54' AGL/587' MSL.  
 Trees beginning 1599' from DER, 394' right of centerline, up to 50' AGL/595' MSL.  
 Trees beginning 1780' from DER, 314' right of centerline, up to 52' AGL/607' MSL.  
 Trees beginning 1823' from DER, 316' right of centerline, up to 53' AGL/611' MSL.  
 Trees beginning 2200' from DER, 356' right of centerline, up to 54' AGL/630' MSL.  
 Tree 2.1 NM from DER, 3729' right of centerline, 18' AGL/627' MSL.

AK, 31 OCT 2024 to 26 DEC 2024

AK, 31 OCT 2024 to 26 DEC 2024