

WAAS CH 53315 W21A	APP CRS 209°	Rwy Idg TDZE Apt Elev	3986 175 181
--	------------------------	-----------------------------	---

RNAV (GPS) RWY 21

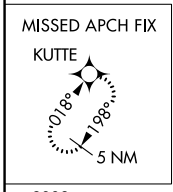
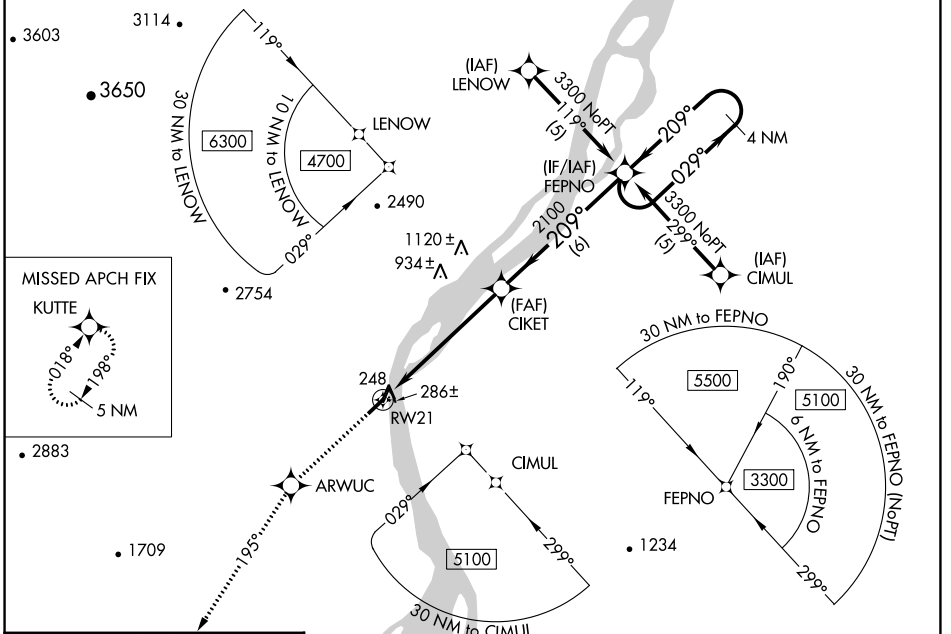
KALTAG (KAL)(PAKV)

RNP APCH-GPS.

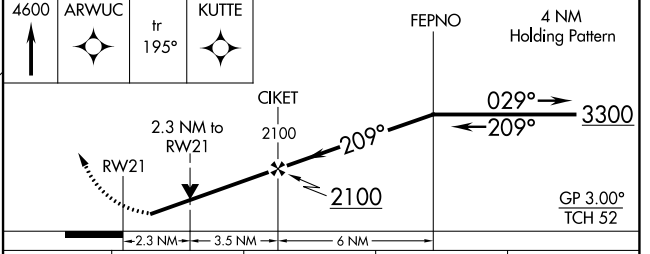
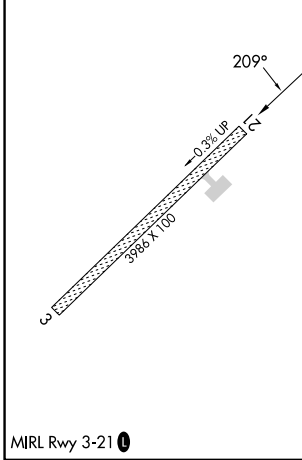
▼ For uncompensated Baro-VNAV systems, LNAV/VNAV NA below -25°C or above 54°C. Helicopter visibility reduction below ¾ SM NA. Circling Rwy 3 NA at night.

⚠ MISSED APPROACH: Climb to 4600 direct ARWUC and via track 195° to KUTTE and hold, continue climb-in-hold to 4600.

AWOS-3 135.25	ANCHORAGE CENTER 127.0 290.2	CTAF 122.9
-------------------------	--	----------------------



ELEV 181	TDZE 175
----------	----------



CATEGORY	A	B	C	D
LPV DA	493-1 318 (400-1)			NA
LNAV/VNAV DA	598-1½ 423 (500-1½)			NA
LNAV MDA	960-1 785 (800-1)	960-1¼ 785 (800-1¼)	960-2¼ 785 (800-2¼)	NA
CIRCLING	960-1 779 (800-1)	960-1¼ 779 (800-1¼)	1200-3 1019 (1100-3)	NA

AK, 31 OCT 2024 to 26 DEC 2024

AK, 31 OCT 2024 to 26 DEC 2024