

WAAS CH <b>77807</b> <b>W21A</b>	APP CRS <b>211°</b>	Rwy Idg TDZE Apt Elev	<b>4000</b> <b>658</b> <b>658</b>
----------------------------------------	------------------------	-----------------------------	-----------------------------------------

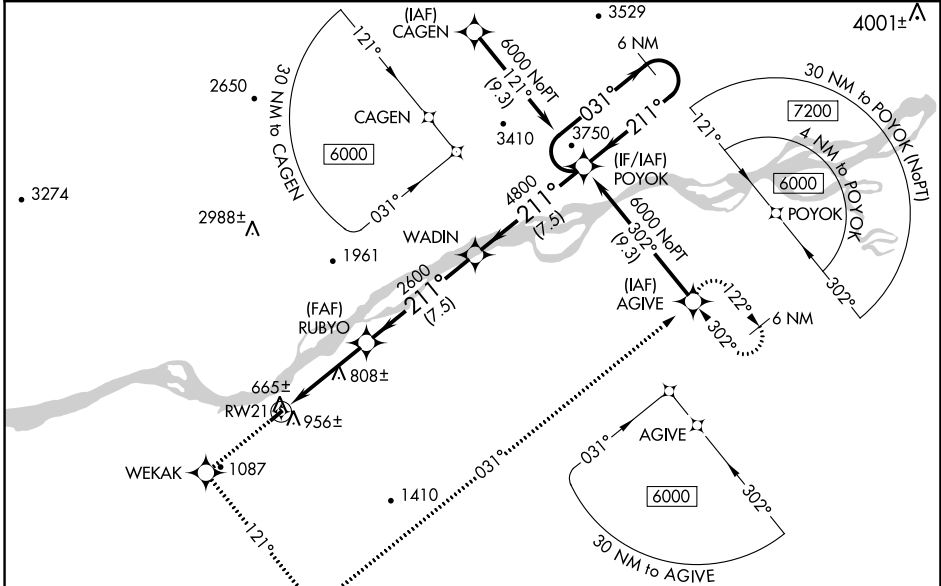
# RNAV (GPS) RWY 21

RUBY (RBY) (PARY)

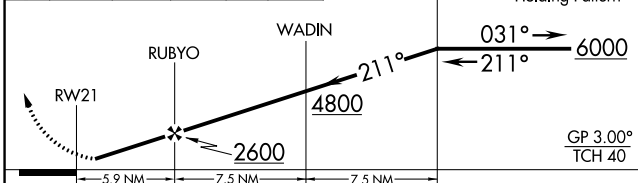
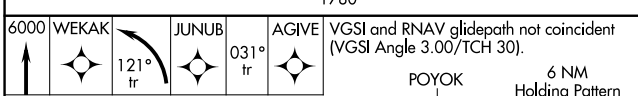
**⚠** Baro-VNAV NA when using Galena altimeter setting. For uncompensated Baro-VNAV systems, LNAV/VNAV NA below -16°C (4°F) or above 54°C (130°F). DME/DME RNP-0.3 NA. Visibility reduction by helicopters NA. When local altimeter setting not received, use Galena altimeter setting and increase all DA/MDA 340 feet and all visibilities 1 SM.

**MISSED APPROACH:** Climb to 6000 direct WEKAK and left turn via 121° track to JUNUB and via 031° track to AGIVE and hold.

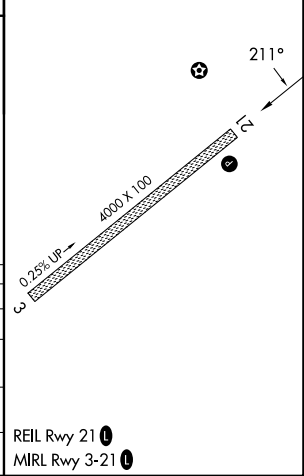
AWOS-3P <b>118.25</b>	ANCHORAGE CENTER <b>127.0 290.2</b>	FAIRBANKS RADIO <b>122.25</b>	CTAF <b>122.8</b> <b>0</b>
--------------------------	----------------------------------------	----------------------------------	-------------------------------



ELEV 658	TDZE 658
----------	----------



CATEGORY	A	B	C	D
LPV DA	919-1	261 (300-1)		NA
LNAV/VNAV DA	1199-2	541 (600-2)		NA
LNAV MDA	1220-1	562 (600-1)	1220-1½ 562 (600-1½)	NA
CIRCLING	1260-1 602 (700-1)	1400-1 742 (800-1)	1400-2¼ 742 (800-2¼)	NA



AK, 31 OCT 2024 to 26 DEC 2024

AK, 31 OCT 2024 to 26 DEC 2024