

APP CRS 073°	Rwy Idg TDZE Apt Elev	3280 57 57
------------------------	-----------------------------	---------------------------------------

RNAV (GPS) RWY 7

PILOT POINT (PNP)(PAPN)

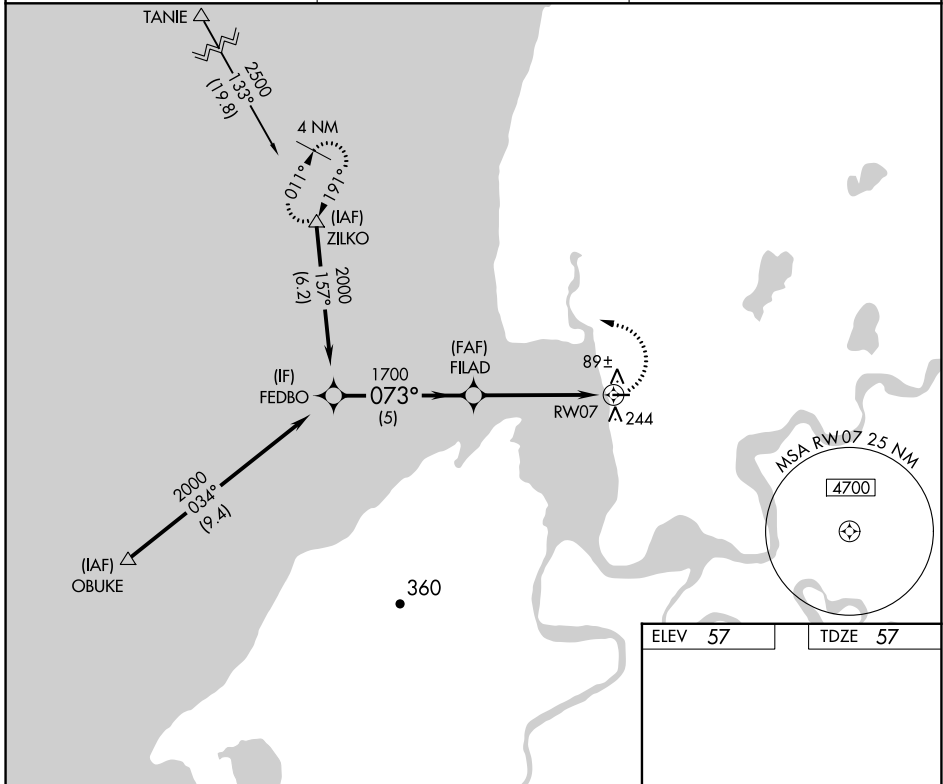
⚠ DME/DME RNP-0.3 NA. When local altimeter setting not received, use King Salmon altimeter setting and increase all MDA 180 feet.

MISSED APPROACH: Climbing left turn to 2500 direct ZILKO and hold.

AWOS-3P
118.375

ANCHORAGE CENTER
132.9 288.3

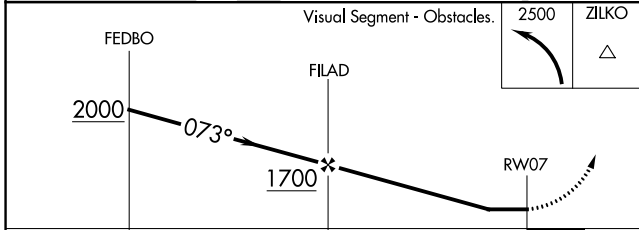
CTAF
122.9



AK, 31 OCT 2024 to 26 DEC 2024

AK, 31 OCT 2024 to 26 DEC 2024

ELEV 57	TDZE 57
---------	---------



Detailed runway diagram for RWY 07. The runway is 3280 x 75 feet with a 0.6% upward slope. The MSA is 4700 feet. The MRL is Rwy 7-25. The diagram also shows the 2500 ft obstacle and the 073° heading to the runway.

CATEGORY	A	B	C	D
LNNAV MDA	520-1	463 (500-1)		NA
CIRCLING	600-1	543 (600-1)		NA