

WAAS CH 45743 W33A	APP CRS 333°	Rwy Idg TDZE Apt Elev	3100 192 192
--	------------------------	-----------------------------	---

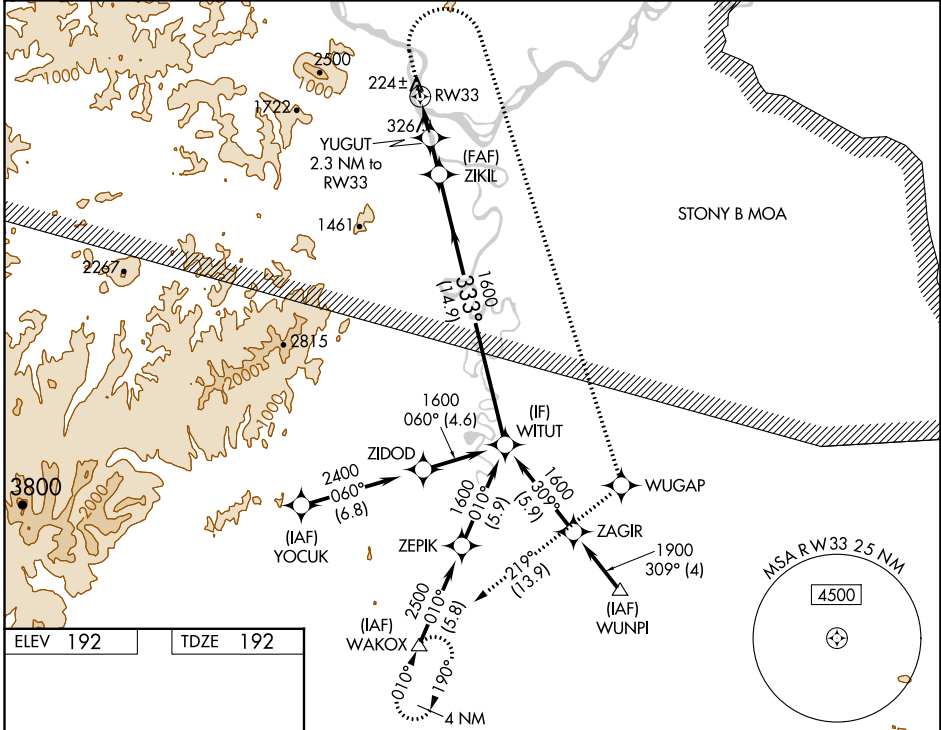
RNAV (GPS) RWY 33

SLEETMUTE (SLQ)(PASL)

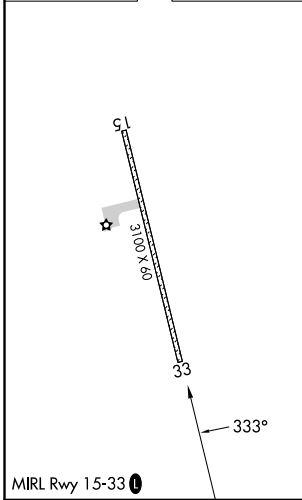
RNP APCH.
 Circling NA west of Rwy 15-33. Procedure NA at night.
 Rwy 33 helicopter visibility reduction below 1 SM NA.
 -36°C

MISSED APPROACH: Climb to 600, then climbing right turn to 3000 direct WUGAP, then track 219° to WAKOX and hold.

AWOS-3P 134.85	ANCHORAGE CENTER 128.5 379.9	UNICOM 122.8 (CTAF)
--------------------------	--	-------------------------------



ELEV 192	TDZE 192
----------	----------



600	3000	WUGAP	tr 219°	WAKOX	ZIKIL	WITUT
		YUGUT 2.3 NM to RW33		≤3.00° TCH 40		
RW33		960		1600	333° 1600	
2.3 NM		2 NM		14.9 NM		
CATEGORY	A	B	C	D		
LP MDA	580-1	388 (400-1)	NA			
LNAV MDA	900-1	708 (800-1)	NA			
CIRCLING	900-1	960-1	NA			
	708 (800-1)	768 (800-1)				

AK, 31 OCT 2024 to 26 DEC 2024

AK, 31 OCT 2024 to 26 DEC 2024