

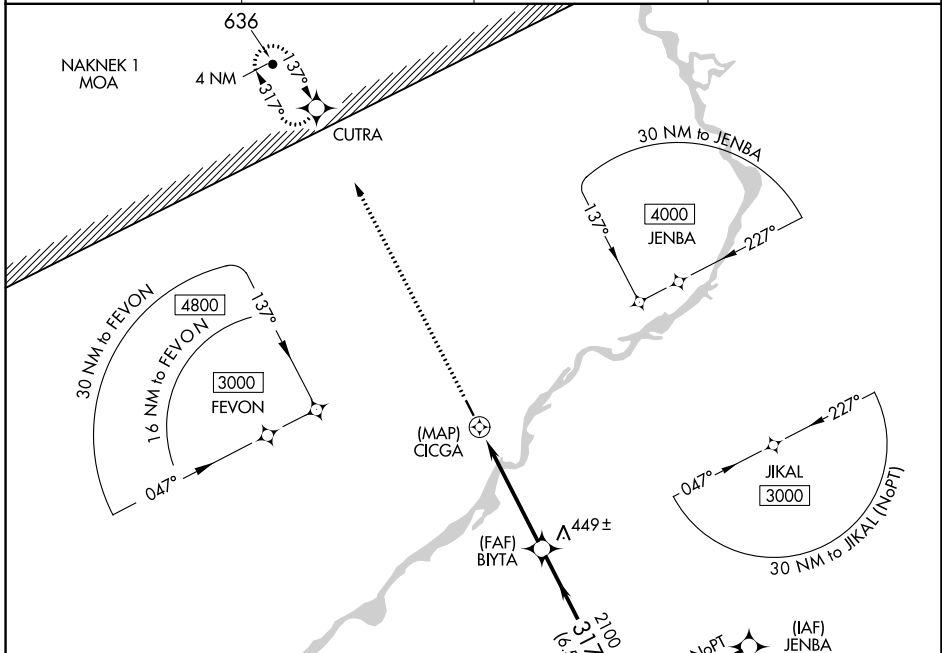
APP CRS	Rwy Idg	<b>3281</b>
<b>317°</b>	TDZE	<b>368</b>
	Apt Elev	<b>371</b>

# RNAV (GPS) RWY 32

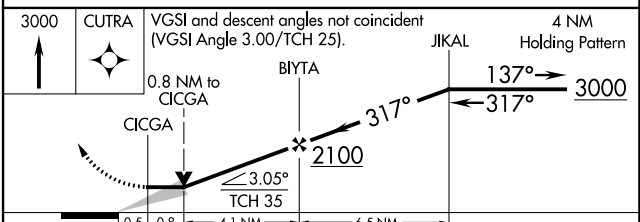
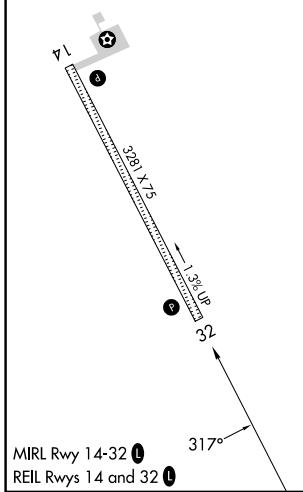
NEW STUYAHOK (KNW) (PANW)

RNP APCH - GPS.	MISSED APPROACH: Climb to 3000 direct CUTRA and hold.
<p>▼ When local altimeter setting not received, use JZZ/PAJZ altimeter setting and increase all MDAs 60 feet. Procedure NA at night.</p>	

AWOS-3P <b>120.275</b>	ANCHORAGE CENTER <b>132.75 282.35</b>	DILLINGHAM RADIO <b>122.55</b>	CTAF <b>122.9</b>
---------------------------	--	-----------------------------------	----------------------



ELEV 371	TDZE 368
----------	----------



CATEGORY	A	B	C	D
LNAV MDA	760-1	392 (400-1)	NA	
CIRCLING	780-1 409 (500-1)	840-1 469 (500-1)	NA	

AK, 31 OCT 2024 to 26 DEC 2024

AK, 31 OCT 2024 to 26 DEC 2024