

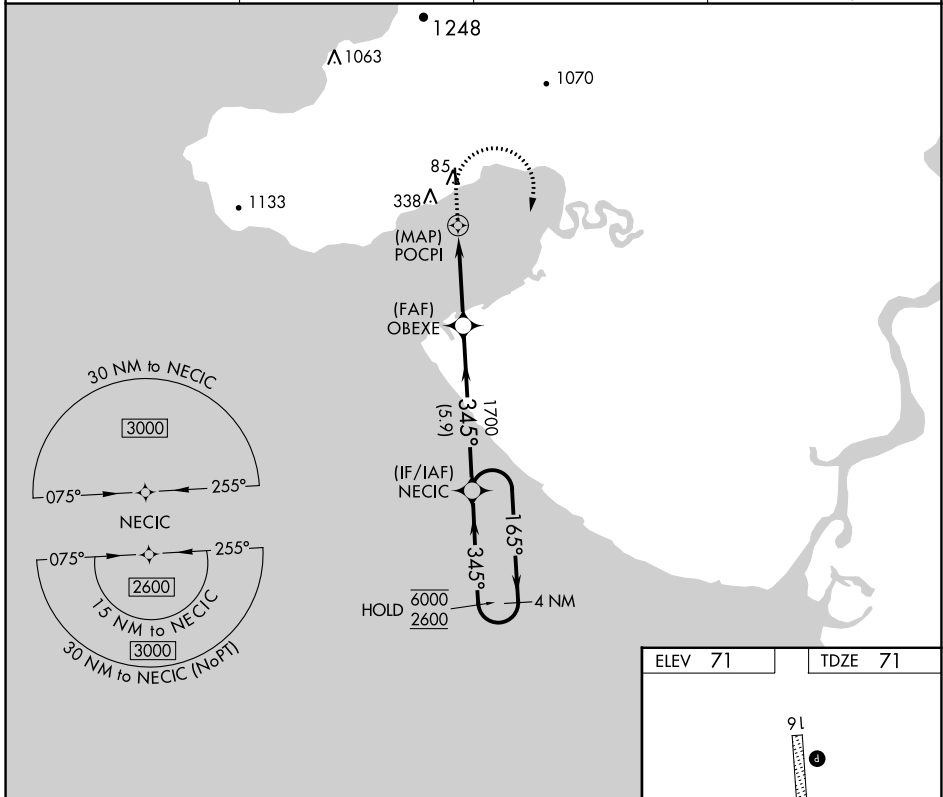
WAAS CH 93524 W34A	APP CRS 345°	Rwy Idg TDZE Apt Elev	3200 71 71
--	------------------------	-----------------------------	---------------------------------------

RNAV (GPS) RWY 34

TOKSOOK BAY (OOK)(PA00)

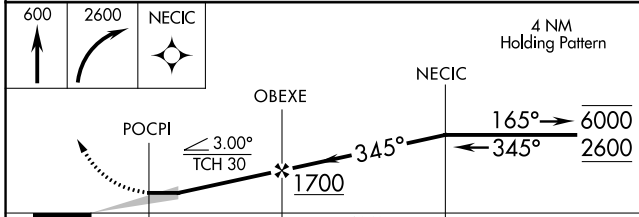
RNP APCH - GPS.	MISSED APPROACH: Climb to 600 then climbing right turn to 2600 direct NECIC and hold.
<p>▼ Circling NA west of Rwy 16-34. When local altimeter setting not received, use Mekoryuk altimeter setting and increase all MDAs 100 feet.</p>	

AWOS-3P 119.275	ANCHORAGE CENTER 125.2 372.0	KENAI RADIO 122.6	CTAF 122.9
---------------------------	--	-----------------------------	----------------------

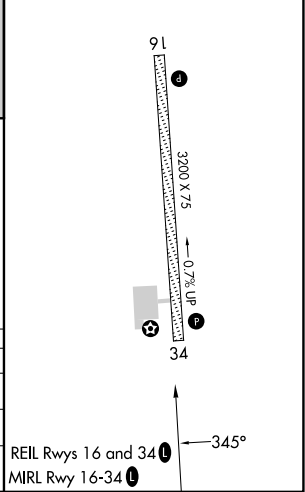


AK, 31 OCT 2024 to 26 DEC 2024

AK, 31 OCT 2024 to 26 DEC 2024



ELEV 71	TDZE 71
---------	---------



CATEGORY	A	B	C	D
LP MDA	340-1 ³ / ₄	269 (300-1 ³ / ₄)		NA
LNAV MDA	420-1 ³ / ₄	349 (400-1 ³ / ₄)		NA
C CIRCLING	460-1 ³ / ₄ 389 (400-1 ³ / ₄)	540-1 ³ / ₄ 469 (500-1 ³ / ₄)		NA

REIL Rwy 16 and 34
MIRL Rwy 16-34