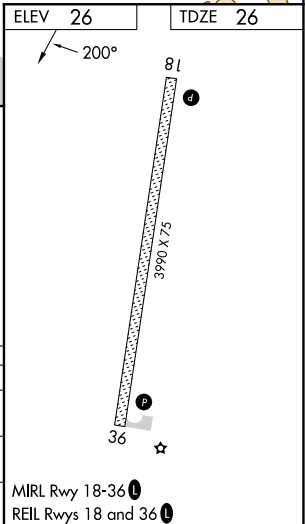
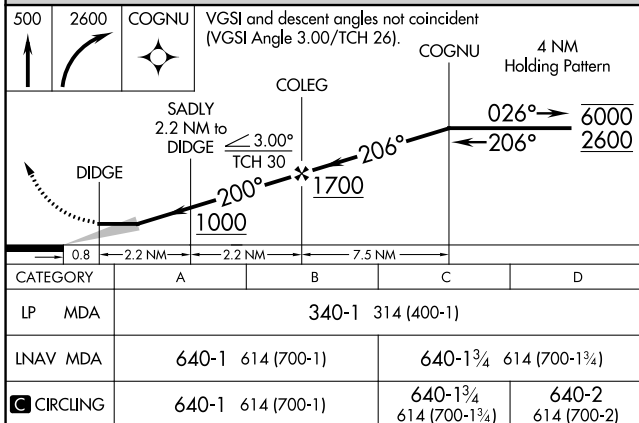
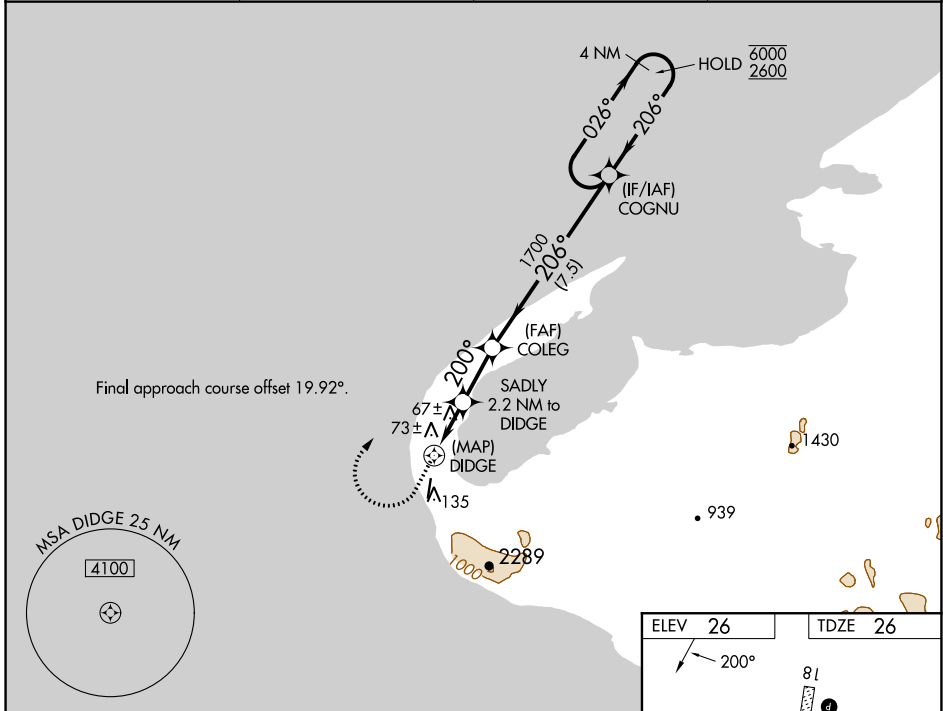


WAAS CH 57942 W18A	APP CRS 200°	Rwy Idg 3990 TDZE 26 Apt Elev 26
--	------------------------	---

RNAV (GPS) RWY 18

WALES (IWK) (PAIW)

RNP APCH. -26°C Circling NA east of Rwy 18-36.		MISSED APPROACH: Climb to 500 then climbing right turn to 2600 direct COGNU and hold.	
AWOS-3P 118.525	ANCHORAGE CENTER 133.3 290.4	NOME RADIO 122.6	CTAF 123.0



ELEV	26	TDZE	26
------	----	------	----

500	2600	COGNU	VGSI and descent angles not coincident (VGSI Angle 3.00/TCH 26).	COGNU	4 NM Holding Pattern
-----	------	-------	--	-------	----------------------

COLEG	SADLY 2.2 NM to DIDGE	≤ 3.00° TCH 30	206°	1700	206°	6000/2600
-------	-----------------------	----------------	------	------	------	-----------

DIDGE	0.8	2.2 NM	2.2 NM	7.5 NM
-------	-----	--------	--------	--------

CATEGORY	A	B	C	D
----------	---	---	---	---

LP MDA	340-1 314 (400-1)			
--------	-------------------	--	--	--

LNAV MDA	640-1	614 (700-1)	640-1¾	614 (700-1¾)
----------	-------	-------------	--------	--------------

CIRCLING	640-1	614 (700-1)	640-1¾	640-2	614 (700-2)
----------	-------	-------------	--------	-------	-------------

MIRL Rwy 18-36

REIL Rwys 18 and 36

AK, 31 OCT 2024 to 26 DEC 2024

AK, 31 OCT 2024 to 26 DEC 2024