

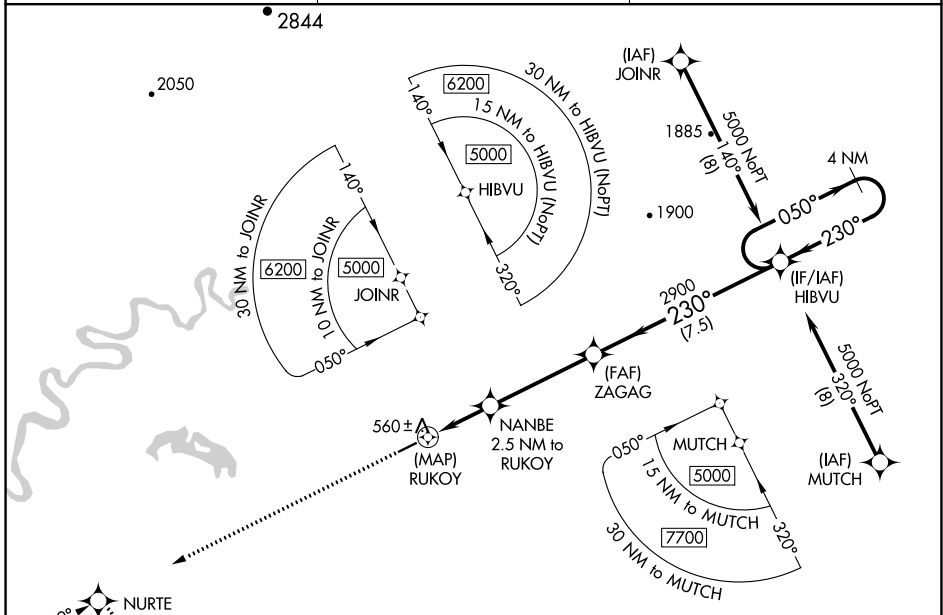
APP CRS	Rwy Idg	4001
230°	TDZE	448
	Apt Elev	448

RNAV (GPS) RWY 23

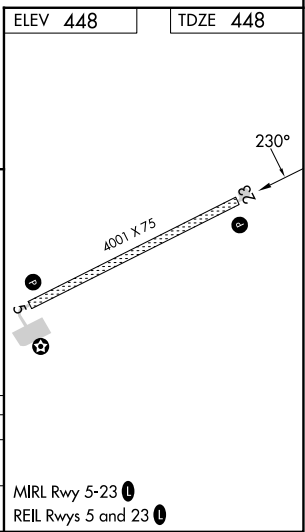
NIKOLAI (F/SP)(P/AFS)

RNP APCH.	MISSED APPROACH: Climb to 3000 direct NURTE and hold.
<p>▼ Rwy 23 helicopter visibility reduction below 3/4 SM NA.</p>	

AWOS-3P 118.325	ANCHORAGE CENTER 128.1 353.8	CTAF 122.8
---------------------------	--	----------------------



3000	NURTE	VGSi and descent angles not coincident (VGSi Angle 3.20/TCH 28).			
		RUKOY	NANBE	ZAGAG	HIBVU
		0.5 NM to RUKOY	2.5 NM to RUKOY		4 NM Holding Pattern
		1500	2900	5000	
		0.5	2 NM	4.1 NM	7.5 NM
CATEGORY	A	B	C	D	
RNAV MDA	820-1 372 (400-1)				
CIRCLING	860-1 412 (500-1)	900-1 452 (500-1)	900-1½ 452 (500-1½)	1000-2 552 (600-2)	



AK, 31 OCT 2024 to 26 DEC 2024

AK, 31 OCT 2024 to 26 DEC 2024