

APP CRS	Rwy Idg	<b>4001</b>
<b>049°</b>	TDZE	<b>448</b>
	Apt Elev	<b>448</b>

# RNAV (GPS) RWY 5

NIKOLAI (F/SP)(P/AFS)

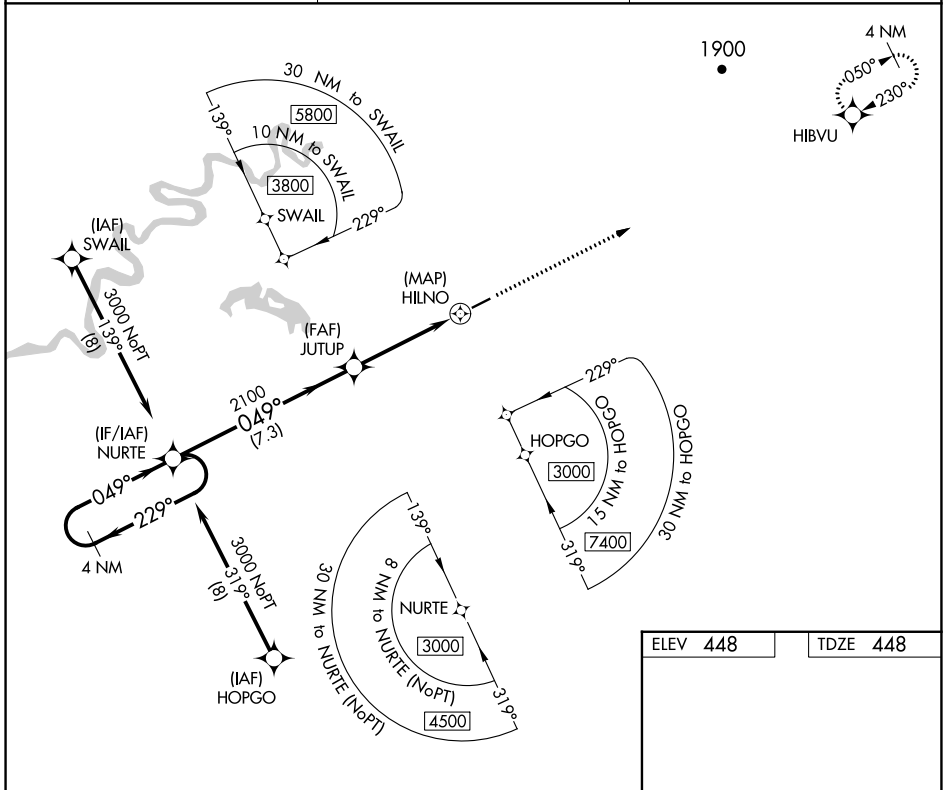
RNP APCH.  
 Rwy 5 helicopter visibility reduction below 3/4 SM NA.

MISSED APPROACH: Climb to 5000 direct HIBVU and hold, continue climb-in-hold to 5000.

AWOS-3P  
**118.325**

ANCHORAGE CENTER  
**128.1 353.8**

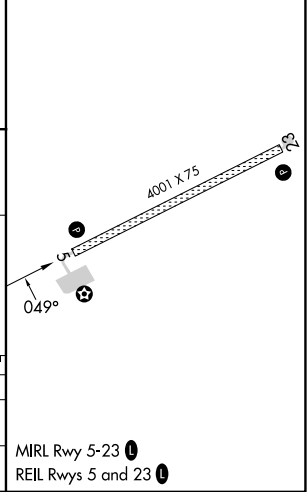
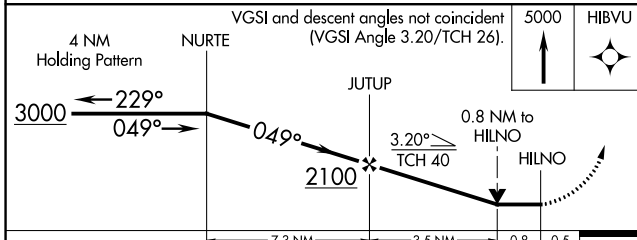
CTAF  
**122.8**



AK, 31 OCT 2024 to 26 DEC 2024

AK, 31 OCT 2024 to 26 DEC 2024

ELEV 448	TDZE 448
----------	----------



CATEGORY	A	B	C	D
LNVA MDA	900-1 452 (500-1)		900-1 3/8 452 (500-1 3/8)	
CIRCLING	900-1 452 (500-1)		900-1 1/2 452 (500-1 1/2)	1000-2 552 (600-2)