

APP CRS Rwy Idg **3800**
 254° TDZE **623**
 Apt Elev **624**

RNAV (GPS) RWY 25

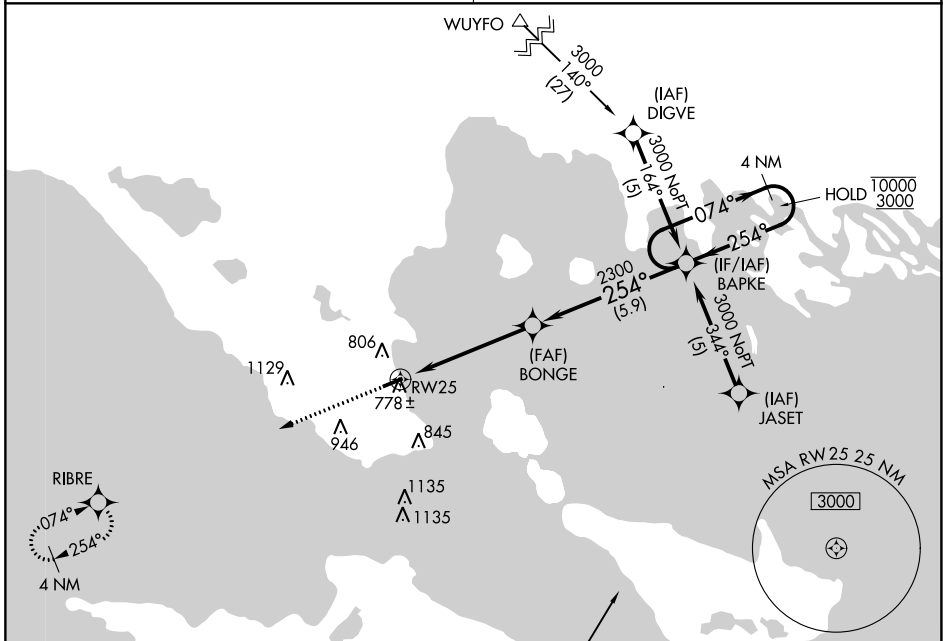
MACKINAC COUNTY (83D)

RNP APCH. Circling Rwy 7 NA at night.
 Circling NA at night south of Rwy 7-25.
 Rwy 25 helicopter visibility reduction below ¾ SM NA.

MISSED APPROACH: Climb to 3000 direct RIBRE and hold.

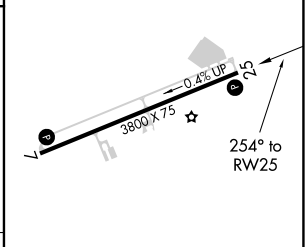
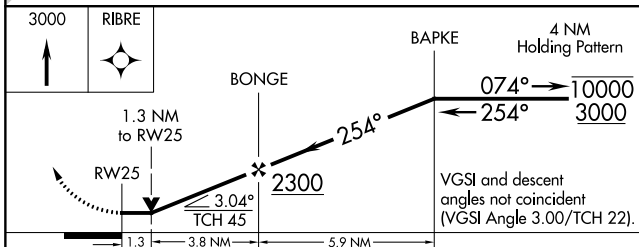
MINNEAPOLIS CENTER
134.6 354.05

UNICOM
122.7 (CTAF) 0



Procedure NA for arrival on PLN VORTAC airway radial 023.

ELEV 624 TDZE 623



CATEGORY	A	B	C	D
LNVA MDA	1040-1	417 (500-1)	1040-1½ 417 (500-1½)	NA
CIRCLING	1260-1	636 (700-1)	1300-2 676 (700-2)	NA

MIRL Rwy 7-25 0
 REIL Rwy 7 and 25 0