

APP CRS	Rwy Idg	3800
074°	TDZE	624
	Apt Elev	624

RNAV (GPS) RWY 7

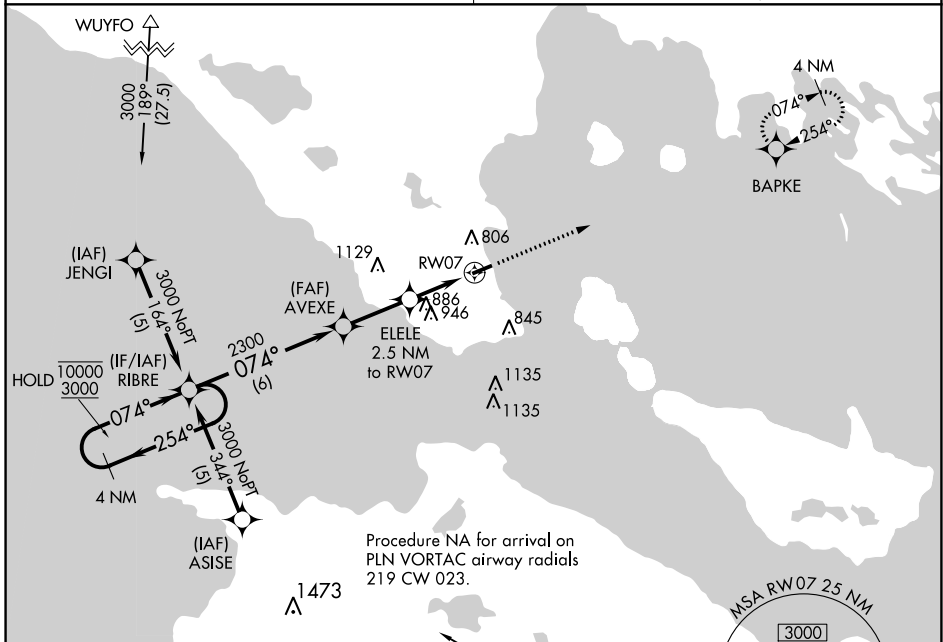
MACKINAC COUNTY (83D)

RNP APCH.
 ▼ Straight-in Rwy 07 NA at night, Circling Rwy 07 NA at night.
 ▲ NA Rwy 07 helicopter visibility reduction below 1 SM NA.
 Circling NA at night south of Rwy 07-25.

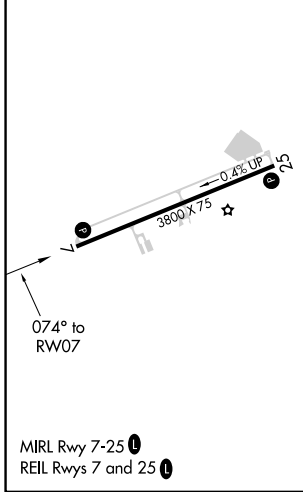
MISSED APPROACH: Climb to 3000 direct BAPKE and hold.

MINNEAPOLIS CENTER
134.6 354.05

UNICOM
122.7 (CTAF) 0



ELEV	624	TDZE	624
------	-----	------	-----



	4 NM Holding Pattern	RIBRE	Visual Segment - Obstacles.	3000	BAPKE
	10000 3000	← 254°	074° →	↑	✦
		AVEXE	ELELE 2.5 NM to RW07		
		2300	1460		
		6 NM	2.6 NM	2.5 NM	
CATEGORY	A	B	C	D	
LNAV MDA	1200-1	576 (600-1)	1200-1½ 576 (600-1½)	NA	
CIRCLING	1260-1	636 (700-1)	1300-2 676 (700-2)	NA	

EC-1, 28 NOV 2024 to 26 DEC 2024

EC-1, 28 NOV 2024 to 26 DEC 2024