

WAAS CH 97316 W19A	APP CRS 193°	Rwy Idg TDZE Apt Elev	6000 488 488
--	------------------------	-----------------------------	---

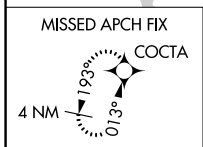
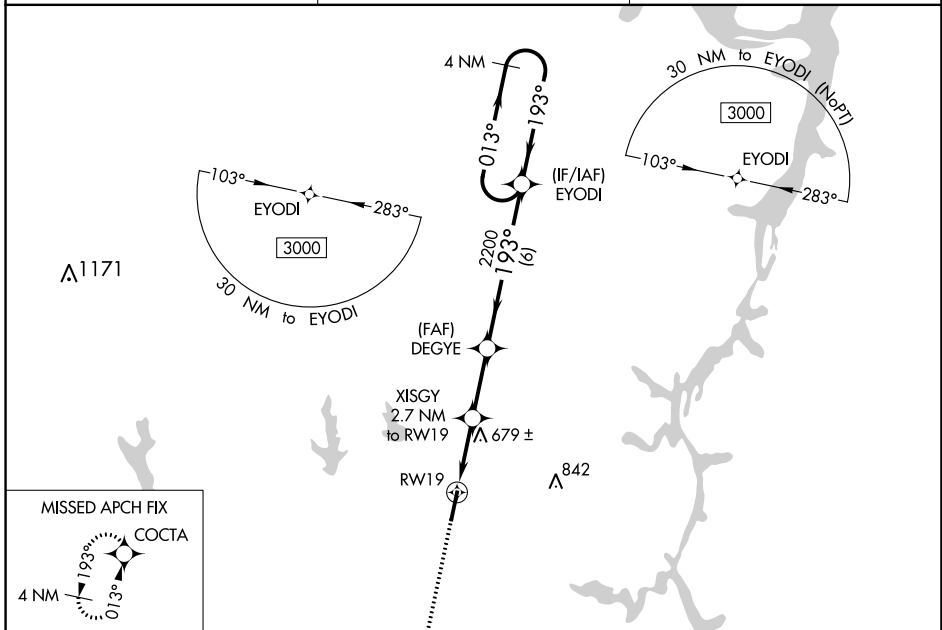
RNAV (GPS) RWY 19

BEECH RIVER RGNL (PVE)

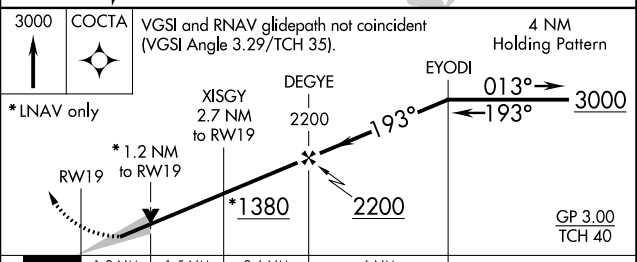
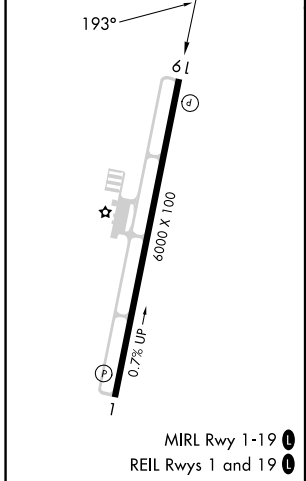
▼ For uncompensated Baro-VNAV systems, LNAV/VNAV NA below -15°C (5 °F) or above 54 °C (130°F).
 ▲ DME/DME RNP-0.3 NA. When local altimeter setting not received, use Jackson altimeter setting: increase LPV all Cats DA to 828 and all Cats visibility ¼ mile; increase LNAV/VNAV all Cats DA to 890 and all Cats visibility ⅓ mile; increase all MDA 100 feet and LNAV Cats C/D and Circling Cat C visibility ¼ mile and Circling Cat D visibility ½ mile. VDP and Baro-VNAV NA when using Jackson altimeter setting.

MISSED APPROACH: Climb to 3000 direct COCTA and hold.

AWOS-3 118.125	MEMPHIS CENTER 125.85 379.25	UNICOM 123.0 (CTAF) 0
--------------------------	--	---------------------------------



ELEV 488	TDZE 488
-----------------	-----------------



CATEGORY	A	B	C	D
LPV DA		738-7/8	250 (300-7/8)	
LNAV/VNAV DA		800-1	312 (400-1)	
LNAV MDA	940-1	452 (500-1)	940-1 3/8	452 (500-1 3/8)
<input checked="" type="checkbox"/> CIRCLING	940-1 452 (500-1)	980-1 492 (500-1)	1000-1 1/2 512 (600-1 1/2)	1200-2 1/4 712 (800-2 1/4)

SE-1, 28 NOV 2024 to 26 DEC 2024

SE-1, 28 NOV 2024 to 26 DEC 2024