

WAAS CH <b>70528</b> <b>W09A</b>	APP CRS <b>094°</b>	Rwy Idg <b>5002</b> TDZE <b>357</b> Apt Elev <b>359</b>
--	------------------------	---

# RNAV (GPS) RWY 9

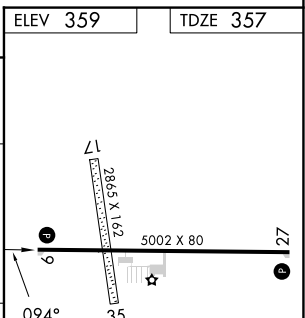
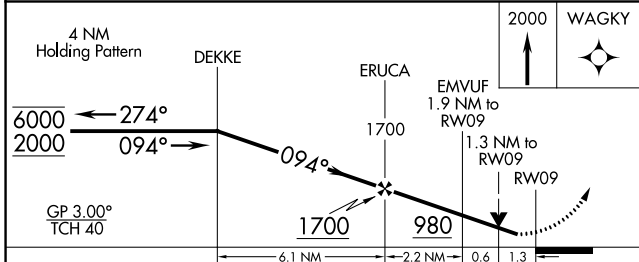
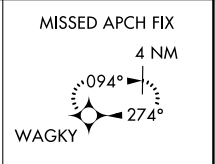
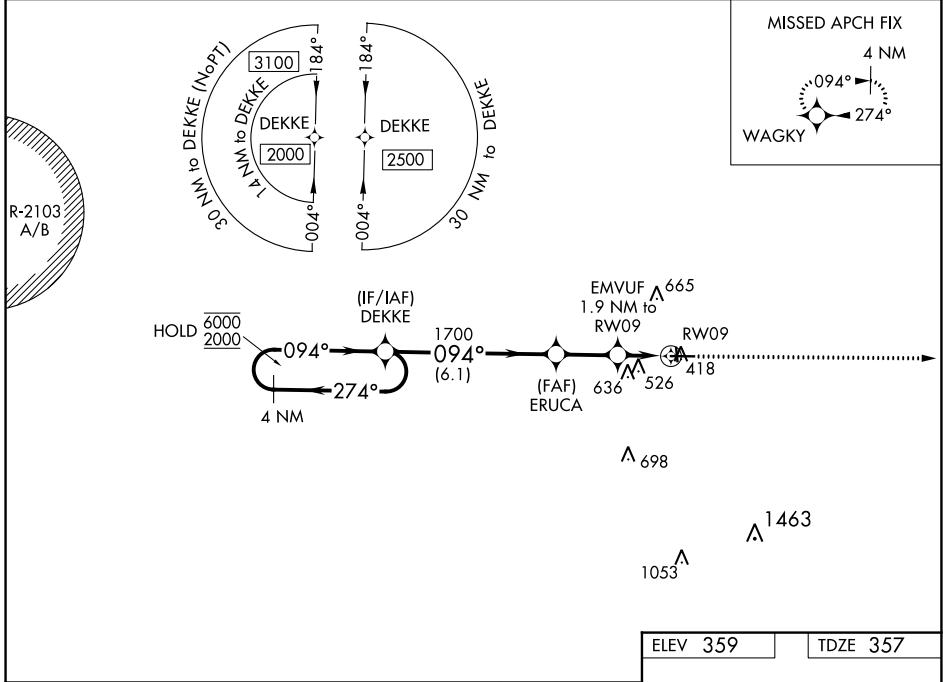
HEADLAND MUNI (HDL)

RNP APCH - GPS.

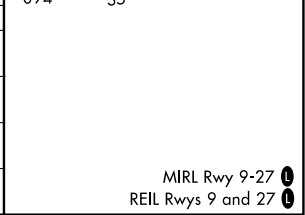
**⚠** Circling NA to Rwy 17 and 35. Circling Rwy 27 NA at night.  
**⚠** Rwy 9 helicopter visibility reduction below 3/4 SM NA.

MISSED APPROACH: Climb to 2000 direct WAGKY and hold.

AWOS-3PT <b>119.575</b>	CAIRNS APP CON ★ <b>125.4</b>	CTAF <b>122.90</b>
----------------------------	----------------------------------	-----------------------



CATEGORY	A	B	C	D
LPV DA	631-1 274 (300-1)			NA
LNAV/DA	810-1 <sup>3</sup> / <sub>8</sub> 453 (500-1 <sup>3</sup> / <sub>8</sub> )			NA
LNAV MDA	800-1 443 (500-1)		800-1 <sup>3</sup> / <sub>8</sub> 443 (500-1 <sup>3</sup> / <sub>8</sub> )	NA
<b>C</b> CIRCLING	860-1 501 (600-1)	940-1 581 (600-1)	980-1 <sup>3</sup> / <sub>4</sub> 621 (700-1 <sup>3</sup> / <sub>4</sub> )	NA



SE-4, 28 NOV 2024 to 26 DEC 2024

SE-4, 28 NOV 2024 to 26 DEC 2024