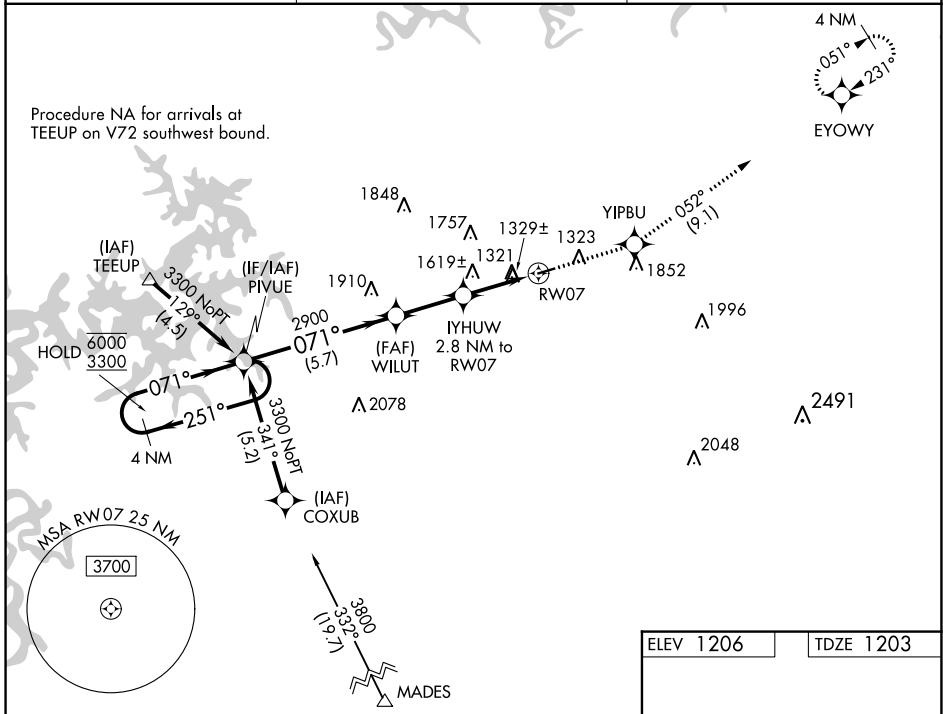


WAAS CH 40242 W07A	APP CRS 071°	Rwy ldg TDZE 1203 Apt Elev 1206
--	------------------------	---

RNAV (GPS) RWY 7

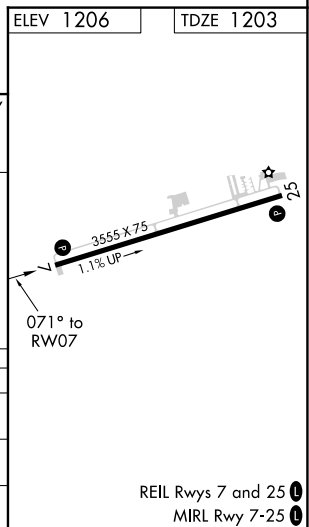
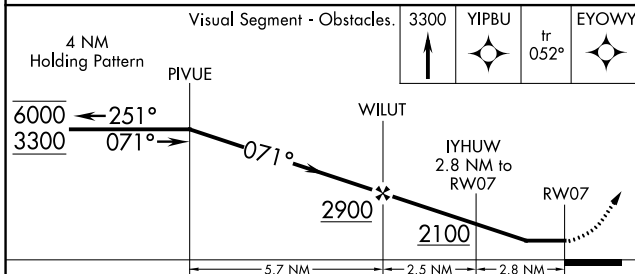
CARROLL COUNTY (4M1)

RNP APCH-GPS.		MISSED APPROACH: Climb to 3300 direct YIPBU and on track 052° to EYOWY and hold.
▼ Rwy 7 helicopter visibility reduction below 1 SM NA. Use Branson altimeter setting; when not received, use Rogers altimeter setting and increase all MDA 20 feet. Rwy 7 Straight-in and Circling minimums NA at night.		
BGG AWOS-3 124.625	RAZORBACK APPROACH ★ 126.6 305.2	CTAF 122.9



SC-1, 28 NOV 2024 to 26 DEC 2024

SC-1, 28 NOV 2024 to 26 DEC 2024



CATEGORY	A	B	C	D
LP MDA	1760-1	557 (600-1)		NA
LNAV MDA	1940-1	737 (800-1)		NA
C CIRCLING	1940-1 734 (800-1)	1980-1 774 (800-1)		NA