

WAAS CH <b>58324</b> <b>W12A</b>	APP CRS <b>138°</b>	Rwy Idg TDZE Apt Elev <b>6901</b> <b>2022</b> <b>2032</b>
--	------------------------	--

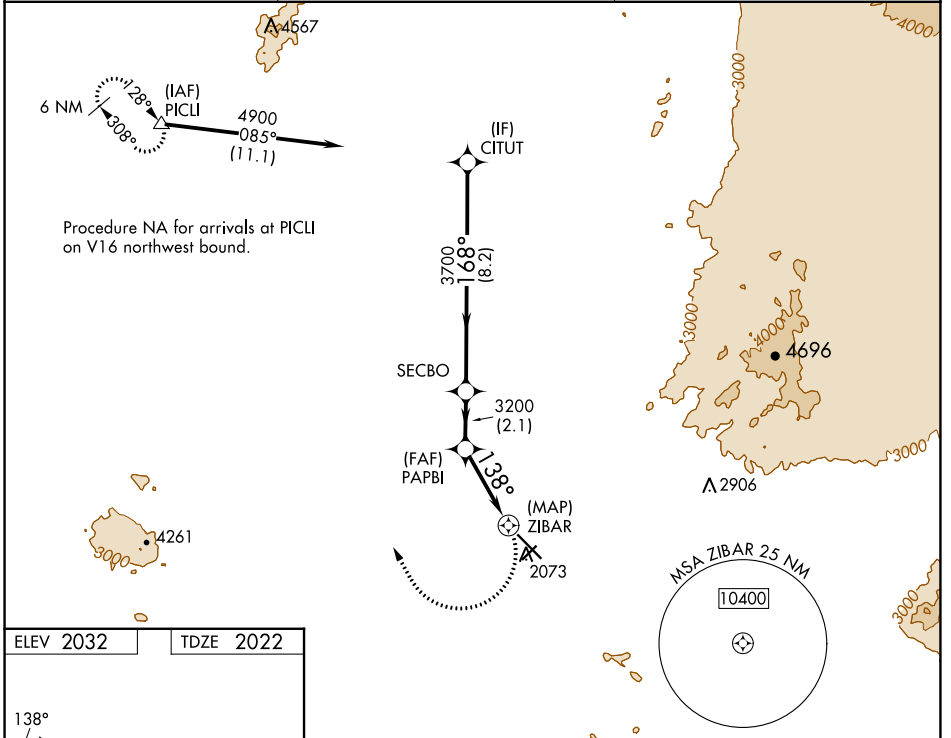
# RNAV (GPS) RWY 12

MARANA RGNL (AVQ)

**⚠️ NA** DME/DME RNP-0.3 NA. When local altimeter setting not received, use Ryan Fld altimeter setting and increase all MDA 100 feet, increase LP and LNAV Cat C visibility  $\frac{1}{4}$  SM and Circling Cat C visibility  $\frac{1}{2}$  SM.

MISSED APPROACH: Climbing right turn to 6500 direct PICLI and hold, continue climb-in-hold to 6500.

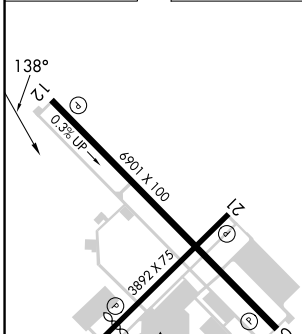
AWOS-3 <b>118.375</b>	TUCSON APP CON <b>119.4 318.1</b>	UNICOM <b>123.0 (CTAF)</b> <b>0</b>
--------------------------	--------------------------------------	--



SW-4, 28 NOV 2024 to 26 DEC 2024

SW-4, 28 NOV 2024 to 26 DEC 2024

ELEV 2032	TDZE 2022
-----------	-----------



REIL Rwy 3 and 21  
REIL Rwy 12 and 30 **0**  
MIRL Rwy 3-21 and 12-30 **0**

CITUT	4900	SECBO	PABPI	ZIBAR	6500	PICLI
	8.2 NM	2.1 NM	3.1 NM	0.5 NM		
CATEGORY	A	B	C	D		
LP MDA	2420-1	398 (400-1)	2420-1 $\frac{1}{8}$ 398 (400-1 $\frac{1}{8}$ )	NA		
LNAV MDA	2440-1	418 (500-1)	2440-1 $\frac{1}{4}$ 418 (500-1 $\frac{1}{4}$ )	NA		
CIRCLING	2440-1 408 (500-1)	2540-1 508 (600-1)	2680-1 $\frac{3}{4}$ 648 (700-1 $\frac{3}{4}$ )	NA		